

PLANNING COMMISSION
March 12, 2025

The public may view the public meeting at:
www.youtube.com/user/cityofisleofpalms

Public Comment: Citizens may provide public comment here:
<https://www.iop.net/public-comment-form>

AGENDA

The Isle of Palms Planning Commission will hold its regular meeting on Wednesday, March 12, 2025, at 4:30 p.m. in Council Chambers of City Hall, 1207 Palm Boulevard.

- A. Call to order and acknowledgment that the press and the public were duly notified in accordance with state law.
- B. Approval of minutes February 12, 2025
- C. New business Consider approving a new street name at Wild Dunes back gate
- D. Old business Review of Comprehensive Plan
Review of Sea Level Rise Adaptation Plan
Review of Community Enrichment Task Force recommendations
- E. Miscellaneous business
- F. Adjourn

 **Wild
Dunes® COMMUNITY ASSOCIATION, INC.**

6200 Palmetto Drive • Isle of Palms, South Carolina 29451-3815
(843) 886-8847 • Fax: (843) 886-3745
www.wilddunesowners.org

March 3, 2025

Matt Simms
Isle of Palms Zoning Administrator
1207 Palm Blvd., Isle of Palms, SC 29451

Dear Mr. Simms,

I am writing to respectfully request your consideration of renaming “No Name Road” in Isle of Palms, SC to honor David Kynoski, former Chief Operating Officer of the Wild Dunes Community Association. This road plays a key role in our community and the WDCA Board of Directors would like to honor Dave for his twenty-seven years of service.

The WDCA Board of Directors approved a motion at its Board meeting on Wednesday, February 26 to proceed with the steps necessary to rename the road “Dave Drive”.

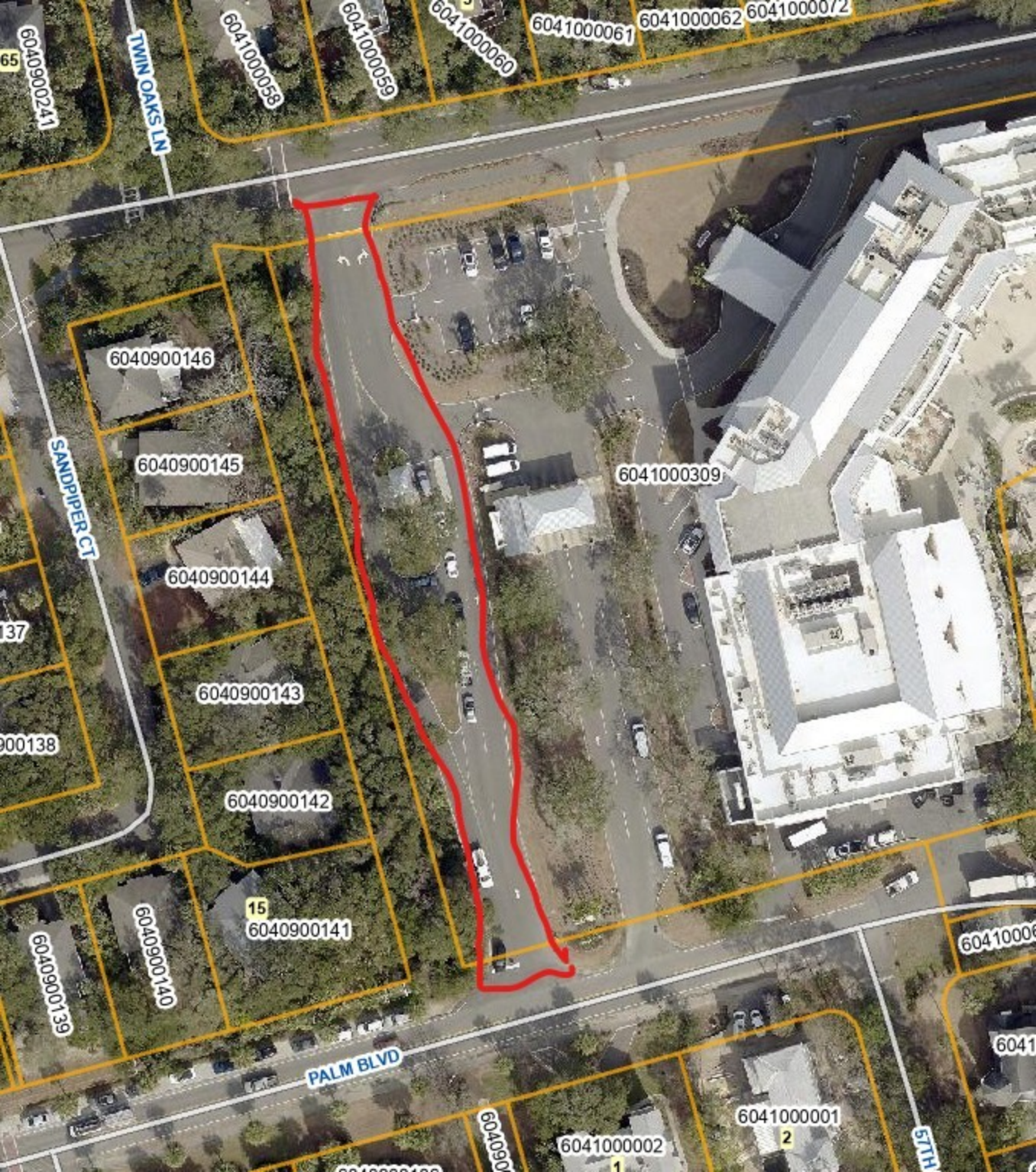
I understand that renaming a road involves a process, and I am willing to assist in any way necessary. It would be greatly appreciated if you could present our request to the Isle of Palms Planning Commission and keep me posted on next steps.

Thank you for your time and consideration of this request. I look forward to hearing from you and hope that we can work together to honor Dave in a meaningful way.

Sincerely,



Andrew P. Schumacher, COO



6040900241

TWIN OAKS LN

604100058

604100059

604100060

604100061

604100062

604100072

6040900146

6040900145

6040900144

6040900143

6040900142

15
6040900141

6040900140

6040900139

6041000309

604100000

PALM BLVD

604100001

604100002

604090000

57TH

6041

2

1



**Planning Commission Meeting
4:00pm, Wednesday, February 12, 2025
1207 Palm Boulevard, Isle of Palms, SC and
broadcasted live on YouTube: <https://www.youtube.com/user/cityofisleofpalms>**

MINUTES

1. Call to Order

Present: Ron Denton, Sue Nagelski, Sandy Stone, Tim Ahmuty, Jeffrey Rubin,
David Cohen, Rich Steinert

Staff present: Director Kerr, Zoning Administrator Simms

2. Approval of minutes

MOTION: Mr. Stone made a motion to approve the minutes of the January 8, 2025 meeting. Mr. Cohen seconded the motion. The motion passed unanimously.

3. New Business -- none

4. Old Business

Review of Comprehensive Plan, Sea Level Rise Adaptation Plan, and Community Enrichment Plan Task Force Recommendations

Director Kerr said that City Council will be leaning on the Planning Commission to parse through these documents and provide guidance. It will be the Planning Commission's role to see where all of these plans overlap and how they integrate into the Comprehensive Plan and the City's Strategic Plan as well as how to divide the recommendations of all plans into manageable goals and actions.

The Community Enrichment Task Force plan will be available to review online via the City's website soon. Director Kerr explained the work done by the Task Force, adding that their plan makes nearly 200 recommendations. Recommendations related to Public Safety will be directed to the Public Safety Committee and those environmentally-related will be directed to the Environmental Advisory Committee. Director Kerr will send a link to the plan when available.

The Sea Level Rise Adaptation Plan will be presented to City Council at their March workshop. Director Kerr believes many of the guidelines suggested in that plan will also come back to the Planning Commission.

City Council and the Planning Commission will hold a joint meeting in April to discuss the Comprehensive Plan.

Commissioners discussed the likelihood of redundancies in these plans and how they could be incorporated into the Comprehensive Plan. Director Kerr suggested the Sea Level Rise Adaptation Plan and Community Enrichment Plan could be footnoted in the Comprehensive Plan and referenced as appendices.

Director Kerr and Zoning Administrator Simms will work on creating a matrix of the tasks, recommendations, and next steps in the plans pertinent to the Planning Commission, noting those that have budget implications. They will bring this back to the Commissioners in March.

Director Kerr will send a clean version of the Comprehensive Plan to the Commissioners. He asked them to refamiliarize themselves with the plan ahead of the April meeting with City Council.

5. Miscellaneous

The next meeting of the Planning Commission will be Wednesday, March 12, 2025 at 4:00pm.

6. Adjournment

Mr. Stone made a motion to adjourn, and Mr. Steinert seconded the motion. The meeting was adjourned at approximately 4:51pm.

Respectfully submitted,

Nicole DeNeane
City Clerk

Recommendation	Source	Category/Focus Area	Assigned Committee	Timeline of	Type of Recomme	Budget
Explore creating an electronic means (text or web-based form) of contacting police and generating incident reports for non-emergency issues, which includes acknowledgement of receipt and notification of next	Community Enrichment Plan	Public Safety	Public Safety Committee	Short	Exploratory	\$
Identify and promote an electronic process for residents, property owners, and businesses to proactively provide background information about their property and special needs of individuals living there to assist	Community Enrichment Plan	Public Safety	Public Safety Committee	Short	Actionable	
Monitor safety conditions and rule compliance at the public dock daily, confirming the presence of a life-saving ring, and evaluating the condition of dock surfaces and railings.	Community Enrichment Plan	Public Safety	Public Safety Committee	Short	Actionable	
Frequently incorporate safety-related information in messages from multiple city communication channels; place particular emphasis on increasing use of Sunnie for real-time communication. Suggested topics	Community Enrichment Plan	Public Safety	Public Safety Committee	Short	Actionable	\$
Work with golf cart rental companies to develop a communication piece for distribution to each renter, a placard/sticker to be posted in each cart, and/or a pledge to be signed by all renters that emphasizes stat	Community Enrichment Plan	Public Safety	Public Safety Committee	Short	Actionable	
Consider passing an ordinance adding a requirement for golf cart and LSV owners/users to read and agree to a golf cart/LSV safety pledge emphasizing state and local laws.	Community Enrichment Plan	Public Safety	Public Safety Committee	Short	Exploratory	
Advocating to appropriate state agencies, ex. South Carolina Department of Transportation ("SCDOT"), to reinstall speed limit signs removed from Waterway Boulevard, Palm Boulevard, and any other interior st	Community Enrichment Plan	Public Safety	Public Safety Committee	Medium	Actionable	
Request permission from SCDOT to install permanent speed monitoring/reporting mechanism near Waterway Boulevard & 29th Avenue to collect real-time data, informing the need for more frequent traffic enfo	Community Enrichment Plan	Public Safety	Public Safety Committee	Medium	Actionable	
Identify locations on the island with the most repetitive parking violations that impact safety and evaluate the need for signage.	Community Enrichment Plan	Public Safety	Public Safety Committee	Short	Actionable	
Given the increased activity, assess the costs, risks, impacts to public beach access, and benefits of taking more aggressive measures, such as depredation on public property; seek appropriate state agency, ex	Community Enrichment Plan	Public Safety	Public Safety Committee	Medium	Exploratory	
Adapt existing Coyote Management Plan to add color-coded threat levels defining triggers for moving between levels AND actions that the city will take at each level.	Community Enrichment Plan	Public Safety	Public Safety Committee	Short	Actionable	
Establish a notification process that would communicate: 1) color-coded threat levels and 2) den locations or reported sighting/incidents so appropriate precautionary measures may be taken. Notify property o	Community Enrichment Plan	Public Safety	Public Safety Committee	Short	Actionable	\$
Notifications should occur via multiple communication channels to include text.	Community Enrichment Plan	Public Safety	Public Safety Committee	Short	Actionable	
Consistently add temporary warning signs to beach paths where coyotes are active.	Community Enrichment Plan	Public Safety	Public Safety Committee	Short	Actionable	
Explore ways to increase police officer and beach safety officer staffing during peak summer hours.	Community Enrichment Plan	Public Safety	Public Safety Committee	Medium	Exploratory	\$\$
Recruit from areas that have high demand in winter months.	Community Enrichment Plan	Public Safety	Public Safety Committee	Short	Actionable	
Recruit semi-retired officers.	Community Enrichment Plan	Public Safety	Public Safety Committee	Short	Actionable	\$\$
Create a beach safety lane, where necessary, by maintaining a corridor from the dune for emergency access.	Community Enrichment Plan	Public Safety	Public Safety Committee	Medium	Actionable	\$\$\$
Restore, update and improve signage for dune protection, coyotes and beach rules.	Community Enrichment Plan	Public Safety	Public Safety Committee	Short	Actionable	\$
Increase public media messages regarding all safety matters.	Community Enrichment Plan	Public Safety	Public Safety Committee	Short	Aspirational	
Restrict e-bike usage with speed limitations on beach accesses.	Community Enrichment Plan	Public Safety	Public Safety Committee	Short	Actionable	
Extend restriction of e-bikes to April 1st through September 14th	Community Enrichment Plan	Public Safety	Public Safety Committee	Short	Actionable	
Collaborate with other beach communities to request state officials to ban firearms from the beach.	Community Enrichment Plan	Public Safety	Public Safety Committee	Medium	Aspirational	
Get community/resident support to change state laws to designate the beach as a no firearms zone.	Community Enrichment Plan	Public Safety	Public Safety Committee	Long	Aspirational	
Require registration of any Hobie Cat and volleyball nets that might be left on the beach (similar to Myrtle Beach and Hilton Head).	Community Enrichment Plan	Public Safety	Public Safety Committee	Short	Actionable	
Explore installing "in-pavement lighting" on existing crosswalks on Palm Boulevard for increased visibility to advancing cars with brighter paint to designate pedestrian space.	Community Enrichment Plan	Public Safety	Public Services and Facilities	Medium	Exploratory	\$\$
Maintain 4' off pavement chalk line on Palm Boulevard more than just weekends.	Community Enrichment Plan	Public Safety	Public Safety Committee	Short	Maintenance	
Request new, more accurate renderings of Palm Boulevard including existing driveways, beach paths, mailboxes and drainage ditches prioritizing safety of residents and beachgoers. Engage the Berkeley Charle	Community Enrichment Plan	Public Safety	Public Safety Committee	Long	Actionable	\$\$\$
Increase the width of the existing sidewalk on Palm Boulevard landside between 21st and 40th and trim all overgrown vegetation. Consider marking cross streets to indicate pedestrian crossing.	Community Enrichment Plan	Public Safety	Public Services and Facilities	Long	Exploratory	\$\$\$
Increase enforcement of speed limit along Palm Boulevard 21st-41st in the off season.	Community Enrichment Plan	Public Safety	Public Safety Committee	Short	Actionable	
Consider adding more crosswalks and sidewalks island wide based off data from walkability study with emphasis on 27th, 28th, 29th streets surrounding the recreation center. Possible funding may come from t	Community Enrichment Plan	Public Safety	Planning Commission	Long	Exploratory	\$\$\$
Program intersection at IOP connector and Palm Boulevard that emphasizes the pedestrian right of way with use of lead pedestrian intervals (all-way stop) and raised materials that designate pedestrian space.	Community Enrichment Plan	Public Safety	Public Safety Committee	Medium	Actionable	\$
Request updated traffic study to help direct makeover of Palm Boulevard that focuses on pedestrian safety along with traffic and seasonal adjustments.	Community Enrichment Plan	Public Safety	Public Safety Committee	Medium	Actionable	\$\$
Revisit wayfinding signage plan and improve throughout the island.	Community Enrichment Plan	Public Safety	Public Services and Facilities	Medium	Exploratory	\$
Clean, better mark, maintain, increase signage and possibly enlarge existing bike lanes on Palm Boulevard from 14th Avenue to Breach Inlet.	Community Enrichment Plan	Public Safety	Public Services and Facilities	Medium	Actionable	\$
Create a clear path off the connector to bike to Front Beach/County park incorporating the existing path from 14th to Breach inlet.	Community Enrichment Plan	Public Safety	Planning Commission	Long	Actionable	\$\$\$
Encourage bikers in the direction of the existing bike lane from 14th Avenue to Breach Inlet with improved signage and education of local bike groups to avoid the areas of Palm 21-41st Avenues where there is m	Community Enrichment Plan	Public Safety	Public Safety Committee	Medium	Actionable	
Determine feasibility for a bike route off the main roadways and sidewalks through neighborhoods or other lower traffic areas. i.e. Waterway Boulevard on the east bound side.	Community Enrichment Plan	Public Safety	Planning Commission	Long	Exploratory	\$\$\$
Install bike repair/air station at the public safety building and recreation center.	Community Enrichment Plan	Public Safety	Public Safety Committee	Short	Actionable	\$
Consider hiring independent consultants to assess performance and departmental needs periodically.	Community Enrichment Plan	Public Safety	Public Safety Committee	Short	Exploratory	\$\$
Combat attrition by performing an annual review of compensation packages and adjusting to make and keep IOP public safety positions competitive.. Match or exceed those of comparable roles..	Community Enrichment Plan	Public Safety	Public Safety Committee	Short	Actionable	\$\$
Consider post-retirement health care options for public safety personnel, possibly with the assistance of state/county organizations.	Community Enrichment Plan	Public Safety	Public Safety Committee	Long	Exploratory	\$\$\$
Provide training budgets that meet the ever-changing needs of the Police and Fire Departments.	Community Enrichment Plan	Public Safety	Public Safety Committee	Medium	Actionable	\$\$
Modify the court schedule to have less impact on work shift schedules. Investigate virtual options.	Community Enrichment Plan	Public Safety	Public Safety Committee	Medium	Exploratory	
Explore ways to compensate for the lack of affordable local housing. Look at cost of living increases, housing allowances, and/or incentives for IOP property owners to rent to public safety personnel. Explore usir	Community Enrichment Plan	Public Safety	Public Safety Committee	Long	Exploratory	\$\$\$
Evaluate partnerships with Wild Dunes Resort and Wild Dunes Community Association to establish a staffed and equipped public safety building inside of Wild Dunes reducing response times, providing much-n	Community Enrichment Plan	Public Safety	Public Safety Committee	Long	Exploratory	\$\$\$
Hire seasonal, part-time police officers, recruiting retired police officers when possible; one such position to serve as a transport officer.	Community Enrichment Plan	Public Safety	Public Safety Committee	Medium	Actionable	\$\$\$
Require local businesses hosting events to pay for additional police support to avoid having to pull scheduled patrol officers away from patrolling the rest of the island.	Community Enrichment Plan	Public Safety	Public Safety Committee	Short	Actionable	
Conduct annual review of equipment needs to include considerations for things like a high-water vehicle for the Fire Department and more diverse patrolling options for the Police Department (bicycles, motorcy	Community Enrichment Plan	Public Safety	Public Safety Committee	Short	Exploratory	
Consider how to best acquire an accelerant and explosive detection canine for large events, which may include a mutual aid agreement and/or shared use with other jurisdictions.	Community Enrichment Plan	Public Safety	Public Safety Committee	Medium	Exploratory	\$\$\$
Ask the Police Department to present a plan for a formalized drone program utilizing licensed volunteers to supplement the police force. Ensure the plan clearly defines public spaces where drone use can help n	Community Enrichment Plan	Public Safety	Public Safety Committee	Medium	Exploratory	
Assess the Recreation Center property and facilities to determine the options for expansion or a reconfiguration to support demand and growth in program participation, adequate indoor & outdoor storage, and	Community Enrichment Plan	Quality of Life	Public Services and Facilities	Long	Exploratory	\$\$\$
Explore partnerships with Wild Dunes, Charleston County Parks, and the IOP Exchange Club to utilize their facilities in the off-peak season (e.g. pool activities and youth golf lessons for courses at Wild Dunes, u	Community Enrichment Plan	Quality of Life	Public Services and Facilities	Medium	Exploratory	

Upgrade Recreation Center interior spaces. Give primary attention to cabinetry, fans, audio visual, sound and lighting equipment, storage, paint, and ceiling repairs. Include equipment necessary to live stream and record events held in the Magnolia Room. Install charging stations and workspaces in the lobby.	Community Enrichment Plan	Quality of Life	Public Services and Facilities (Medium	Actionable	\$\$\$	
Explore upgrades to outdoor spaces at the Recreation Center and Mayor Carmen R. Bunch Park. <ul style="list-style-type: none"> Utilize native plants. Add swings, benches, picnic tables, etc. Create a community garden at the Recreation Center. Expand Recreation Center's outdoor shelter to support diverse programming and events, providing fans, electricity, and a stage for music. Explore options for providing an expanded electrical grid throughout the Recreation Center property to support large community events and athletics. Create a WIFI hotspot at the Recreation Center and its surrounding property. 	Community Enrichment Plan	Quality of Life	Public Services and Facilities (Long	Exploratory	\$\$\$	
Consider using existing City properties to increase public access to the water for paddle sports, fishing, etc., or more passive uses (benches/swings). Update indoor and outdoor facilities to create a safe and wel	Community Enrichment Plan	Quality of Life	Public Services and Facilities (Long	Exploratory	\$\$\$	
Focus on the acquisition of properties to increase our public space: Contact The Beach Company to identify small pocket parcels they own. Monitor real estate listings of properties located between the current Recreation Center property and Waterway Boulevard; evaluate purchases that could enlarge the recreation footprint.	Community Enrichment Plan	Quality of Life	Planning Commission	Long	Aspirational	\$\$\$
Emphasize sustainable/environmentally friendly practices at the Recreation Center.	Community Enrichment Plan	Environmental Stewardsf	Environmental Advisory Comn	Short	Exploratory	
Assess equipment needs to support growing athletic programs.	Community Enrichment Plan	Quality of Life	Public Services and Facilities (Short	Exploratory	\$\$	
Identify unmet recreation needs for which people often leave the island (e.g. youth golf lessons, lacrosse, flag football, gym, year-round swimming, indoor tennis/pickleball, minigolf). Evaluate if there is sufficien	Community Enrichment Plan	Quality of Life	Public Services and Facilities (Short	Exploratory		
Develop programming connected to the water (e.g. kayaking, water safety, beach exercise, paddle boarding, paddle board yoga, eco tours, seining, SCUBA).	Community Enrichment Plan	Quality of Life	Public Services and Facilities (Medium	Actionable	\$	
Facilitate more programming focused on understanding and protecting our natural environment (e.g. beach/saltmarsh/waterways, native plants, native and endangered species).	Community Enrichment Plan	Environmental Stewardsf	Environmental Advisory Comn	Short	Actionable	
Sustain the speaker series by identifying willing presenters with unique skills, knowledge, and life experiences.	Community Enrichment Plan	Quality of Life	Public Services and Facilities (Short	Actionable	\$	
Explore opportunities for teen programming (e.g. babysitter/CPR course, video game tournament, coffee house karaoke/open mic night, community service projects, rock climbing).	Community Enrichment Plan	Quality of Life	Public Services and Facilities (Medium	Exploratory	\$	
Explore bringing in food trucks on youth sports nights and/or once a week on a weeknight from Memorial Day to Labor Day.	Community Enrichment Plan	Quality of Life	Public Services and Facilities (Short	Exploratory	\$	
Make our special events autism- and neurodivergent-friendly by offering a calming space/tent and/or special sensory-friendly times to attend.	Community Enrichment Plan	Quality of Life	Public Services and Facilities (Short	Actionable	\$	
Explore potential of fee based reservations of key facilities.	Community Enrichment Plan	Quality of Life	Public Services and Facilities (Short	Exploratory		
Feature activities and events more prominently in monthly City e-newsletter with departments cross-posting special events on social media. Consider creating a monthly email or e-newsletter just for the Recrea	Community Enrichment Plan	Quality of Life	Public Services and Facilities (Short	Exploratory		
Use Sunnie to communicate about more than special events (e.g. youth sports registration dates, new classes, educational programs); add an option for people to specifically sign up for Recreation Department	Community Enrichment Plan	Quality of Life	Public Services and Facilities (Short	Actionable		
Ensure staff are facilitating two-way communication on social media by responding to comments and inquiries within 24 hours.	Community Enrichment Plan	Quality of Life	Public Services and Facilities (Short	Actionable		
Create a separate calendar for Recreation Center activities on City website and enable a click feature for users to add to their personal calendars.	Community Enrichment Plan	Quality of Life	Public Services and Facilities (Short	Actionable		
Coordinate with Wild Dunes and Wild Dunes Homeowners Associations (HOAs) to share monthly/quarterly updates on programs and events through their communication platforms.	Community Enrichment Plan	Quality of Life	Public Services and Facilities (Short	Exploratory		
Emphasize "we are more than just sports and exercise classes." in communications.	Community Enrichment Plan	Quality of Life	Public Services and Facilities (Short	Aspirational		
Invest more in online marketing of Recreation Department opportunities to ensure residents are fully aware of what is available to them through the City	Community Enrichment Plan	Quality of Life	Public Services and Facilities (Short	Actionable	\$	
Identify communities to learn and evaluate what they have done for noise/light ordinances to see what IOP could explore.	Community Enrichment Plan	Quality of Life	Public Safety Committee	Medium	Exploratory	
Track noise and light complaints across geographical grids to evaluate levels of complaints for targeted mitigation efforts.	Community Enrichment Plan	Public Safety	Public Safety Committee	Medium	Actionable	
Recognize that complaint data may not include Wild Dunes Community Association Security, Wild Dunes Resort Security or other island entity data. Work towards consistent data capture.	Community Enrichment Plan	Public Safety	Public Safety Committee	Short	Aspirational	
Continuously assess the mix of full-time residential, part-time, and STRs to maintain a balance that enhances the livability on the island.	Community Enrichment Plan	Quality of Life	General Administration	Long	Aspirational	
Create a 'Good Neighbor' program to incentivize and recognize those properties that exemplify desirable rentals.	Community Enrichment Plan	Quality of Life	Public Safety Committee	Medium	Actionable	\$
Develop metrics of predetermined thresholds of STR complaints to become a 'trigger' for review of total number of licenses.	Community Enrichment Plan	Quality of Life	Public Safety Committee	Medium	Actionable	
Use the Business License application as a vehicle to encourage rental companies to join consortium meetings for consistent regulation.	Community Enrichment Plan	Quality of Life	General Administration	Medium	Actionable	
Explore adding an online portal for residents to submit STR complaints and follow the response by property managers and the City. This is available through the City's current STR monitoring service.	Community Enrichment Plan	Quality of Life	General Administration	Short	Actionable	
Additional communications to residents and visitors regarding noise and light ordinances, best practices, and process for proper notifications if concerns exist.	Community Enrichment Plan	Quality of Life	Public Safety Committee	Short	Actionable	
Educate more of the positives of the STRs and publish data tracking to residents.	Community Enrichment Plan	Quality of Life	Public Safety Committee	Short	Actionable	
Collaborate with the STR companies to update required signage with quick access to policies/regulations/fines as well as to update on local efforts, i.e., QR Code	Community Enrichment Plan	Quality of Life	Public Safety Committee	Short	Actionable	
Educate public of rental companies' consortium success.	Community Enrichment Plan	Quality of Life	Public Safety Committee	Short	Actionable	
Preserve, protect, manage and enhance the island's natural resources - including the beach, salt marsh and natural areas in the island's interior.	Community Enrichment Plan	Environmental Stewardsf	Environmental Advisory Comn	Long	Aspirational	
Secure grants, provide community education, and collaborate with neighboring communities and state agencies.	Community Enrichment Plan	Environmental Stewardsf	Environmental Advisory Comn	Long	Aspirational	
Have in-house, STEM-focused staff ready for conversations on environmental policy and practices.	Community Enrichment Plan	Environmental Stewardsf	Administration Committee	Long	Actionable	
Protect the city's best interests with cost-effective planning and increased oversight of contractors for resiliency initiatives, including beach preservation and drainage projects.	Community Enrichment Plan	Beach Preservation	Beach Preservation Committe	Long	Aspirational	
Proactively enforce and track violations to environmental ordinances, including those related to beach lights, litter, building, development and tree protections.	Community Enrichment Plan	Environmental Stewardsf	General Administration	Long	Actionable	
Evaluate whether more resources (ex. staff) are needed for proper enforcement.	Community Enrichment Plan	Environmental Stewardsf	Environmental Advisory Comn	Medium	Exploratory	\$\$
Coordinate with property managers and cleaning companies on proper garbage disposal and beachfront lights out policies.	Community Enrichment Plan	Quality of Life	General Administration	Short	Actionable	
Require acknowledgement of city's beach rules as part of the online parking checkout process.	Community Enrichment Plan	Public Safety	Public Safety Committee	Short	Actionable	
Develop consistent data collection that includes water quality testing for the ocean, creeks, marsh and interior; surveys of related wildlife and ecosystems; and sea level rise measurements.	Community Enrichment Plan	Environmental Stewardsf	Environmental Advisory Comn	Long	Actionable	\$
Make environmental data easy to understand, access and share.	Community Enrichment Plan	Environmental Stewardsf	Environmental Advisory Comn	Long	Aspirational	
Advance recommendations from city's developing Sea Level Rise Adaptation Plan.	Community Enrichment Plan	Environmental Stewardsf	Environmental Advisory Comn	Long	Aspirational	
Model, map & monitor areas most susceptible to sea level rise, flooding & storm surges.	Community Enrichment Plan	Environmental Stewardsf	Environmental Advisory Comn	Long	Actionable	
Predict social and economic impacts of climate changes, including cost calculations.	Community Enrichment Plan	Environmental Stewardsf	Environmental Advisory Comn	Long	Aspirational	

Explore recommendations for zoning, retrofitting, setbacks for new construction.	Community Enrichment Plan	Environmental Stewardsf	Planning Commission	Long	Exploratory	
Determine and articulate long-term goals for Adaptation plan that are proactive and transparent. Communicate these elements effectively to the public.	Community Enrichment Plan	Environmental Stewardsf	Environmental Advisory Comn	Long	Aspirational	
Add solar panels to city buildings when it makes sense for sun exposure and roof replacement schedules.	Community Enrichment Plan	Environmental Stewardsf	Environmental Advisory Comn	Medium	Actionable	\$\$\$
Explore transition to battery-powered landscaping equipment to reduce carbon emissions, air & noise pollution.	Community Enrichment Plan	Environmental Stewardsf	Environmental Advisory Comn	Medium	Exploratory	\$\$\$
Consider requesting sustainable practices in city's request for proposals and bids.	Community Enrichment Plan	Environmental Stewardsf	Environmental Advisory Comn	Short	Exploratory	
Encourage fuel efficiency as a consideration when buying new vehicles.	Community Enrichment Plan	Environmental Stewardsf	Environmental Advisory Comn	Short	Aspirational	
Evaluate feasibility of safely adding electric vehicle charging stations.	Community Enrichment Plan	Environmental Stewardsf	Environmental Advisory Comn	Medium	Exploratory	\$\$
Make IOP's environmental leadership a clear and consistent part of the city's brand.	Community Enrichment Plan	Environmental Stewardsf	Environmental Advisory Comn	Long	Aspirational	
Highlight related wins and best practices through the city's communication channels, including the developing environmental section of iop.net.	Community Enrichment Plan	Environmental Stewardsf	General Administration	Short	Actionable	
Secure more related media coverage.	Community Enrichment Plan	Environmental Stewardsf	Environmental Advisory Comn	Short	Actionable	
Add signs to public dock to highlight the location's natural resources, geography and history.	Community Enrichment Plan	Environmental Stewardsf	Environmental Advisory Comn	Short	Actionable	\$\$
With IOP Cleanup Crew, pursue IOP Conservation Station exhibit at Front Beach	Community Enrichment Plan	Environmental Stewardsf	Environmental Advisory Comn	Medium	Actionable	\$\$
Develop plan to increase awareness of challenges and solutions that includes "Do No Harm" messaging for residents, visitors, developers and businesses.	Community Enrichment Plan	Environmental Stewardsf	Environmental Advisory Comn	Short	Actionable	
Provide QR codes in city signage and required messaging for STR's that direct visitors to environmental rules and best practices.	Community Enrichment Plan	Environmental Stewardsf	Environmental Advisory Comn	Medium	Actionable	\$
Explore ways to better share rules with non-English speaking visitors.	Community Enrichment Plan	Environmental Stewardsf	Environmental Advisory Comn	Short	Exploratory	
Create a guide – available electronically and in print form – for residents, developers, contractors and property managers to promote IOP native plants, trees, eco-friendly landscaping and lighting practices.	Community Enrichment Plan	Environmental Stewardsf	Environmental Advisory Comn	Medium	Actionable	
Add an annual eco-themed event to the Recreation Department's annual calendar.	Community Enrichment Plan	Environmental Stewardsf	Environmental Advisory Comn	Short	Actionable	
Involve public in South Carolina Aquarium's Searise sign project.	Community Enrichment Plan	Environmental Stewardsf	Environmental Advisory Comn	Short	Actionable	
Be proactive rather than reactive in beach preservation with quarterly surveying and monitoring.	Community Enrichment Plan	Beach Preservation	Beach Preservation Committe	Short	Aspirational	
Consistently track, project and evaluate the impact of sea level rise, king tides and storms.	Community Enrichment Plan	Beach Preservation	Beach Preservation Committe	Short	Aspirational	
Pursue promising "natural defense" strategies.	Community Enrichment Plan	Environmental Stewardsf	Environmental Advisory Comn	Medium	Actionable	\$\$\$
Have standing permits for agreed-upon projects for beach restoration, shoal management and emergency situations.	Community Enrichment Plan	Beach Preservation	Beach Preservation Committe	Medium	Actionable	
Be fiscally responsible without letting the lowest immediate expense drive decisions.	Community Enrichment Plan	General Administration	General Administration	Short	Aspirational	
Involve Environmental Advisory Committee in review of beach preservation efforts.	Community Enrichment Plan	Beach Preservation	Beach Preservation Committe	Short	Actionable	
Develop consistent signage policies on dune preservation, with approved options that residents can deploy on their property.	Community Enrichment Plan	Beach Preservation	Beach Preservation Committe	Medium	Actionable	\$
Include acknowledgment of beach rules as part of the permitting process for events.	Community Enrichment Plan	Beach Preservation	Beach Preservation Committe	Short	Actionable	
Create a collaborative sense of shared responsibility with the state, local communities and county governments, beach users, and property owners.	Community Enrichment Plan	Beach Preservation	Beach Preservation Committe	Long	Aspirational	
Annually fund beach restoration and maintenance in the city's budget.	Community Enrichment Plan	Beach Preservation	Beach Preservation Committe	Short	Actionable	\$\$\$
Continue to explore ways to increase consistent revenue streams for beach renourishment.	Community Enrichment Plan	Beach Preservation	Beach Preservation Committe	Long	Maintenance	
Lobby SC legislators to take on greater fiscal responsibility for maintaining state's beaches, which they maintain jurisdiction over.	Community Enrichment Plan	Beach Preservation	Beach Preservation Committe	Long	Actionable	\$\$\$
Consider a policy to only use city funds in conjunction with granted property easements and funding from shared stakeholders – unless a disaster has been declared.	Community Enrichment Plan	Beach Preservation	Beach Preservation Committe	Short	Exploratory	
Pinpoint and generate more funding for the remaining major projects, including grant opportunities, to cover estimated costs (for drainage projects)	Community Enrichment Plan	Stormwater Managementf	Public Services and Facilities (Long	Aspirational	
Put more projects in the pipeline, rather than 1-2 at a time (for drainage projects)	Community Enrichment Plan	Stormwater Managementf	Public Services and Facilities (Medium	Actionable	
Work with Isle of Palms Water and Sewer Commission to aggressively pursue grant funding – possibly engaging a federal lobbyist – to support extension of public sewer system.	Community Enrichment Plan	Environmental Stewardsf	General Administration	Short	Actionable	
Encourage neighborhoods to work collaboratively to facilitate connection to the public system without grinder pumps.	Community Enrichment Plan	Environmental Stewardsf	Environmental Advisory Comn	Long	Actionable	
Routinely collect floodwater samples to pinpoint problems and help prioritize areas where individual onsite disposal systems should be replaced.	Community Enrichment Plan	Environmental Stewardsf	Environmental Advisory Comn	Short	Actionable	\$\$\$
Explore funding to aid elderly and fixed income residents in connecting their residences to the public sewer system.	Community Enrichment Plan	Environmental Stewardsf	Environmental Advisory Comn	Medium	Exploratory	
Inspect septic systems upon transfer of ownership to create an inventory of existing systems, collect data on system failures and educate new owners.	Community Enrichment Plan	Environmental Stewardsf	General Administration	Long	Aspirational	
Work with energy provider to accelerate already requested projects.	Community Enrichment Plan	Quality of Life	Public Services and Facilities (Long	Aspirational	
Develop master plan for converting all remaining areas to underground lines.	Community Enrichment Plan	Quality of Life	Public Services and Facilities (Long	Actionable	\$\$\$
Consider location of at-risk palmettos – important to our community's identity & resiliency – and other significant native trees in setting priorities.	Community Enrichment Plan	Environmental Stewardsf	Environmental Advisory Comn	Medium	Exploratory	
Press energy provider to drop use-it-or-lose-it provision of its annual contributions to the non-standard service fund for Isle of Palms, which can help pay for underground projects but currently must be used with	Community Enrichment Plan	Quality of Life	General Administration	Long	Actionable	
Join the South Atlantic Salt Marsh Initiative (SASMI).	Community Enrichment Plan	Environmental Stewardsf	Environmental Advisory Comn	Short	Actionable	
Consult with groups like Charleston's M.A.R.S.H. project, Charleston Waterkeepers, Charleston Climate Coalition, South Carolina Aquarium, Barrier Island Eco Tours, Coastal Expeditions and Audubon Society.	Community Enrichment Plan	Environmental Stewardsf	Environmental Advisory Comn	Short	Aspirational	
Partner with neighboring coastal communities, especially Mount Pleasant & Sullivan's Island.	Community Enrichment Plan	Environmental Stewardsf	Environmental Advisory Comn	Short	Aspirational	
With guidance from local experts, emphasize native plants and gardens at all city parks and properties.	Community Enrichment Plan	Environmental Stewardsf	Environmental Advisory Comn	Short	Actionable	
Include in Request for Proposals (RFPs) for landscaping.	Community Enrichment Plan	Environmental Stewardsf	Environmental Advisory Comn	Short	Actionable	
Target city properties at risk of flooding for adding examples of "rain gardens" and dry ponds.	Community Enrichment Plan	Environmental Stewardsf	Environmental Advisory Comn	Medium	Exploratory	\$\$\$
Encourage and provide incentives for residents, businesses, developers, Wild Dunes Resort and Homeowner Associations (HOA's) to increase native plants on residential and commercial properties.	Community Enrichment Plan	Environmental Stewardsf	Environmental Advisory Comn	Short	Actionable	
Pursue grants to support re-wilding, rain gardens, salt marsh retreat in vulnerable residential areas.	Community Enrichment Plan	Environmental Stewardsf	Environmental Advisory Comn	Medium	Actionable	
Involve residents in planting and monitoring vegetation to help stabilize drainage ditches/canals.	Community Enrichment Plan	Environmental Stewardsf	Environmental Advisory Comn	Medium	Actionable	
Evaluate and modify the city's tree ordinances to elevate conservation of native tree species such as palmetto, live oak, pine and wax myrtle.	Community Enrichment Plan	Environmental Stewardsf	Planning Commission	Short	Exploratory	
Explore funding a city-wide tree survey to document all native trees on the island.	Community Enrichment Plan	Environmental Stewardsf	Environmental Advisory Comn	Medium	Actionable	\$\$
Recruit volunteer neighborhood captains for regular cleanups of non-commercial sections of beach and island's interior.	Community Enrichment Plan	Environmental Stewardsf	Environmental Advisory Comn	Short	Actionable	
Create paid IOP Conservation Team to target litter in busy beach and commercial areas by adding seasonal, part time positions geared to students interested in eco/civic careers. (Isle of Palms Cleanup Crew & f	Community Enrichment Plan	Beach Preservation	Beach Preservation Committe	Short	Actionable	\$

In addition to existing Front Beach setup, explore adding the following to high-traffic beach access paths, with placement closer to the street than dunes: •Cleanup bucket tree					
•No Toys Left Behind” bin					
•Bench for visitors to help them collect their things	Community Enrichment Plan	Environmental Stewardsf Environmental Advisory Comn Short	Exploratory		\$
Consider transitioning to a new system with stable, covered trash receptacles to prevent trash from turning into litter.	Community Enrichment Plan	Environmental Stewardsf Public Services and Facilities (Medium	Exploratory		\$\$
Adjust packaging ordinances to close loopholes and align with neighboring municipalities.	Community Enrichment Plan	Environmental Stewardsf Environmental Advisory Comn Short	Actionable		
Partner with Chamber of Commerce and Isle of Palms Cleanup Crew on workshops for businesses on sustainability practices.	Community Enrichment Plan	Environmental Stewardsf Environmental Advisory Comn Short	Actionable		
Consistent message on welcome signs to “Leave Only Footprints” and “See Beach Rules at www.iop.net .”	Community Enrichment Plan	Environmental Stewardsf Environmental Advisory Comn Short	Aspirational		
Signage at ALL public beach access points with No Smoking message + QR code or complete list of restrictions for beachgoers.	Community Enrichment Plan	Environmental Stewardsf Environmental Advisory Comn Short	Actionable		\$\$
More local promotions with links/QR codes pointing to iop.net “Beach Rules” – including tie-ins with Beach Shuttle.	Community Enrichment Plan	Environmental Stewardsf Environmental Advisory Comn Short	Actionable		
Update the outdated 2013 Stantec Beach Visitor Parking Study.	Community Enrichment Plan	Seasonal Impacts (Traffic Public Services and Facilities (Medium	Actionable		\$\$
Engage Charleston County for help with the increasing expenses of tourism resulting from population growth, increased demand for beach access, and the finite land mass of the island.	Community Enrichment Plan	Seasonal Impacts (Traffic Public Services and Facilities (Short	Actionable		
Lobby the state Legislature to assist coastal municipalities with the increasingly burdensome impacts of tourism.	Community Enrichment Plan	Seasonal Impacts (Traffic General Administration Short	Actionable		
Develop a plan for the city to acquire residential roads from the South Carolina Department of Transportation (“SCDOT”).	Community Enrichment Plan	Seasonal Impacts (Traffic Public Services and Facilities (Medium	Actionable		
Determine the number of spaces and, where appropriate, formally add the following free spaces to the Parking Plan when the LCBMP is updated: • Public right of way adjacent to the IOP Post Office •					
Unregulated public right of way at IOP Recreation Center on Hartnett Boulevard between 28th and 29th Avenues • Designate a certain number of spaces for IOP Recreation Center use ensure adequate spaces for visitors and residents using the Recreation Center.	Community Enrichment Plan	Seasonal Impacts (Traffic Public Services and Facilities (Medium	Actionable		\$\$
Hire a consultant to develop a plan which may include:•Adjusting parking footprint that optimizes both the number of spaces in the LCBMP and traffic flow					
•Registered/monitored parking along state highway - if feasible and supported by the community - which satisfies state law and does not add to the traffic or congestion issues in the neighborhoods					
•Free beach parking in a city lot to encourage parking at Front Beach	Community Enrichment Plan	Seasonal Impacts (Traffic Public Services and Facilities (Medium	Actionable		\$\$
Revisit the Palm Boulevard streetscape proposal.	Community Enrichment Plan	Seasonal Impacts (Traffic Public Services and Facilities (Short	Exploratory		
Request SCDOT fulfill its commitment to replace the “temporary” concrete markers on the landward side of Palm Boulevard with aesthetically-pleasing, low-profile markers.	Community Enrichment Plan	Seasonal Impacts (Traffic Public Services and Facilities (Short	Actionable		
Clearly delineate the spaces on the Seaward side of Palm Boulevard.	Community Enrichment Plan	Seasonal Impacts (Traffic Public Services and Facilities (Short	Actionable		
Continue maintaining the 4’ chalk parking line along Palm Boulevard each week, and ideally reapply after a significant rain event during high season.	Community Enrichment Plan	Seasonal Impacts (Traffic Public Services and Facilities (Short	Maintenance		
Continue supporting the SCDOT-approved Parking Plan, especially the residential parking zones.	Community Enrichment Plan	Seasonal Impacts (Traffic Public Services and Facilities (Short	Maintenance		
Provide real-time data on parking availability via parking registrations/payment	Community Enrichment Plan	Seasonal Impacts (Traffic General Administration Medium	Actionable		
Promote parking resources through Sunnie, Beach Reach app, and https://parkiop.org.	Community Enrichment Plan	Seasonal Impacts (Traffic General Administration Short	Actionable		
Continue to promote alternative means for driving to the beach: use of the Beach Shuttle from Mount Pleasant or cycling, for example.	Community Enrichment Plan	Seasonal Impacts (Traffic General Administration Short	Actionable		
Manage traffic on the Isle of Palms Connector during specific time periods within the course of the year with seasonal police personnel for traffic management.	Community Enrichment Plan	Seasonal Impacts (Traffic Public Safety Committee Short	Actionable		
Investigate the possibility of re-stripping the Isle of Palms Connector to accommodate:•Two lanes of traffic exiting the island					
•Dedicated Bike lane on one side					
•A pedestrian lane that is compliant with SCDOT standards; any additions to the bridge structure should preserve the views that exist today.	Community Enrichment Plan	Seasonal Impacts (Traffic Public Services and Facilities (Long	Exploratory		
Ensure traffic lights at Palm and Rifle Range are timed correctly during high volume times/days.	Community Enrichment Plan	Seasonal Impacts (Traffic Public Services and Facilities (Short	Actionable		
Continue to build relationships with surrounding municipalities and state leaders to effectively manage parking and traffic challenges.	Community Enrichment Plan	Seasonal Impacts (Traffic Public Services and Facilities (Short	Maintenance		
Adjusting parking footprint that optimizes both the number of spaces in the LCBMP and traffic flow	Community Enrichment Plan	Seasonal Impacts (Traffic Public Services and Facilities (Long	Aspirational		\$\$\$
Registered/monitored parking along state highway - if feasible and supported by the community - which satisfies state law and does not add to the traffic or congestion issues in the neighborhoods	Community Enrichment Plan	Seasonal Impacts (Traffic Public Services and Facilities (Long	Aspirational		\$\$\$
Free beach parking in a city lot to encourage parking at Front Beach	Community Enrichment Plan	Seasonal Impacts (Traffic Public Services and Facilities (Long	Aspirational		\$\$\$
Annual review of identified “opportunity areas.”	Community Enrichment Plan	Seasonal Impacts (Traffic Public Services and Facilities (Short	Actionable		
Continue working with a traffic engineer consultant to devise solutions to manage traffic efficiently, minimize congestion, and support funding and implementation of priority recommendations.	Community Enrichment Plan	Seasonal Impacts (Traffic Public Services and Facilities (Short	Actionable		\$\$
Ensure promoting of traffic resources through use of Sunnie, Beach Reach app, and https://parkiop.org.	Community Enrichment Plan	Seasonal Impacts (Traffic General Administration Short	Actionable		
Consider a “Text to Park” model.	Community Enrichment Plan	Seasonal Impacts (Traffic Public Services and Facilities (Short	Exploratory		
Utilize technology to monitor parking availability.	Community Enrichment Plan	Seasonal Impacts (Traffic Public Services and Facilities (Short	Actionable		
Communicate parking alternatives, such as the Beach Shuttle, when approaching full capacity.	Community Enrichment Plan	Seasonal Impacts (Traffic Public Services and Facilities (Short	Actionable		
Establish a parking webpage that offers interactive maps and clear information including, but not limited to, available parking lots and parking areas, number of spaces, prices (seasonal and regular, if applicable)	Community Enrichment Plan	Seasonal Impacts (Traffic Public Services and Facilities (Medium	Actionable		\$\$
Implement elevated tide and emergency operations.	Sea Level Rise Adaptation Plan	Stormwater Managementf Public Services and Facilities (Long	Actionable		\$\$\$
Update zoning ordinances for redevelopment.	Sea Level Rise Adaptation Plan	Stormwater Managementf Planning Commission Medium	Actionable		
Begin Development of Redevelopment Design Tool.	Sea Level Rise Adaptation Plan	Stormwater Managementf Planning Commission Medium	Actionable		
Begin design and permitting of outfall improvements recommended as part of the Phase 4 Masterplan	Sea Level Rise Adaptation Plan	Stormwater Managementf Public Services and Facilities (Medium	Actionable		\$\$\$
Initiate Pilot Projects including: Living shorelines Bioswales and rain gardens.	Sea Level Rise Adaptation Plan	Stormwater Managementf Environmental Advisory Comn Medium	Actionable		
Continue dune and beach nourishment projects.	Sea Level Rise Adaptation Plan	Beach Preservation Beach Preservation Committe Short	Maintenance		\$\$\$
Begin implementation of vegetated berms for perimeter protection.	Sea Level Rise Adaptation Plan	Stormwater Managementf Public Services and Facilities (Medium	Actionable		\$\$\$
Launch a pilot program for private Low Impact Development (LID) stormwater management.	Sea Level Rise Adaptation Plan	Stormwater Managementf Planning Commission Medium	Actionable		
Develop a public education program on resilient strategies.	Sea Level Rise Adaptation Plan	Environmental Stewardsf Environmental Advisory Comn Short	Actionable		

Develop a comprehensive marsh management plan.	Sea Level Rise Adaptation Plan	Environmental Stewardsf	Environmental Advisory Comn	Medium	Actionable	\$\$
Conduct a comprehensive water quality assessment.	Sea Level Rise Adaptation Plan	Environmental Stewardsf	Environmental Advisory Comn	Short	Actionable	\$
Update and enforce zoning ordinances	Sea Level Rise Adaptation Plan	Stormwater Managementf	Planning Commission	Medium	Actionable	
Finalize outfall improvements recommended as part of the Phase 4 Masterplan.	Sea Level Rise Adaptation Plan	Stormwater Managementf	Public Services and Facilities (Medium	Actionable	\$\$\$
Install tide gates as recommended.	Sea Level Rise Adaptation Plan	Stormwater Managementf	Public Services and Facilities (Medium	Actionable	\$\$
Begin installation of underground storage solutions.	Sea Level Rise Adaptation Plan	Stormwater Managementf	Public Services and Facilities (Medium	Actionable	\$\$\$
Transition high-risk properties from septic to sewer systems.	Sea Level Rise Adaptation Plan	Environmental Stewardsf	Environmental Advisory Comn	Long	Aspirational	
Complete Waterway Boulevard enhancements.	Sea Level Rise Adaptation Plan	Stormwater Managementf	Public Services and Facilities (Medium	Actionable	\$\$\$
Establish educational and volunteer programs to promote community involvement.	Sea Level Rise Adaptation Plan	Stormwater Managementf	Environmental Advisory Comn	Short	Actionable	
Incorporate recommended improvements from the water quality assessment.	Sea Level Rise Adaptation Plan	Environmental Stewardsf	Environmental Advisory Comn	Short	Actionable	\$\$
Incorporate marsh management plan.	Sea Level Rise Adaptation Plan	Environmental Stewardsf	Environmental Advisory Comn	Medium	Actionable	\$\$
Transition all at-risk properties from septic to sewer systems.	Sea Level Rise Adaptation Plan	Environmental Stewardsf	Environmental Advisory Comn	Long	Aspirational	
Finish construction of all required perimeter protection.	Sea Level Rise Adaptation Plan	Stormwater Managementf	Public Services and Facilities (Medium	Actionable	\$\$\$
Complete additional stormwater projects recommended as part of the Phase 4 Masterplan.	Sea Level Rise Adaptation Plan	Stormwater Managementf	Public Services and Facilities (Long	Actionable	\$\$\$
Purchase flood-prone property to preserve and or demonstrate conservation practices.	Sea Level Rise Adaptation Plan	Stormwater Managementf	Planning Commission	Long	Actionable	\$\$\$
The City should continue to monitor the Emergency Medical Services serving the island	Comprehensive Plan	Public Safety	Public Safety Committee	Short	Exploratory	
Recreational opportunities for residents should be expanded or added, including additional safe walking or biking areas on the island	Comprehensive Plan	Public Safety	Public Safety Committee	Long	Actionable	\$\$\$
Support commercial development only within the parameters set by the existing zoning regulations and consistent with the City's established character as a residential community	Comprehensive Plan	Quality of Life	Planning Commission	Short	Aspirational	
While the needs of island residents should be paramount, efforts should be made to adjust the level of City services to meet the needs of seasonal visitors as well	Comprehensive Plan	Seasonal Impacts (Traffic	Public Services and Facilities (Short	Aspirational	
The City should continuously monitor and keep records of the effect of seasonal visitors on the quality of life of the permanent residents; this should include, but not be limited to the issues of parking, noise, tra	Comprehensive Plan	Seasonal Impacts (Traffic	Public Safety Committee	Short	Actionable	
Maintain policies and procedures to ensure that beaches, marshlands and marinas are protected and preserved.	Comprehensive Plan	Environmental Stewardsf	Environmental Advisory Comn	Short	Aspirational	
Encourage business development commensurate with the needs of the local community	Comprehensive Plan	Quality of Life	Planning Commission	Short	Aspirational	
Maintain and enhance an effective monitoring system to ensure beaches, marshlands and marinas are properly maintained	Comprehensive Plan	Beach Preservation	Beach Preservation Committe	Short	Actionable	
Monitor the activity of the State Legislature to ensure an equitable formulation of accommodation tax revenue for island communities	Comprehensive Plan	Quality of Life	Accomodations Tax Advisory C	Short	Actionable	
Investigate other sources of revenue that can be generated from daily visitors and longer term tourists	Comprehensive Plan	Quality of Life	Accomodations Tax Advisory C	Short	Actionable	
Analyze revenue streams each year to ensure an appropriate balance is maintained	Comprehensive Plan	Quality of Life	Accomodations Tax Advisory C	Short	Actionable	
Initiate comprehensive study by an outside agency to determine economic impact of visitors on recreational facilities, City services and infrastructure	Comprehensive Plan	Seasonal Impacts (Traffic	Public Services and Facilities (Medium	Actionable	\$\$
Personnel costs make up approximately three-quarters of the City's general fund expenditure budget. Continually scrutinize planned projects for additional long-term personnel costs that may be associated wit	Comprehensive Plan	General Administration	General Administration	Short	Maintenance	
Pursue improving the CRS rating when feasible	Comprehensive Plan	Stormwater Managementf	Planning Commission	Medium	Actionable	
Monitor DHEC/OCRM testing of ocean waters impacting the island	Comprehensive Plan	Environmental Stewardsf	Environmental Advisory Comn	Short	Actionable	
Create a public awareness/education program aimed at protecting the sensitive ecosystem of a barrier island, to include protection of dunes and marshes and their vegetation, as well as the importance of remo	Comprehensive Plan	Environmental Stewardsf	Environmental Advisory Comn	Medium	Actionable	
Support efforts to minimize the impact of erosion throughout the island including beach nourishment projects, as the need arises	Comprehensive Plan	Beach Preservation	Beach Preservation Committe	Short	Actionable	
Investigate the potential for establishing, or acquiring, City owned, undeveloped green spaces	Comprehensive Plan	Environmental Stewardsf	Environmental Advisory Comn	Long	Exploratory	\$\$\$
Pursue enforcement of ordinance(s) aimed at protecting loggerhead turtle nesting activities and sites	Comprehensive Plan	Environmental Stewardsf	Environmental Advisory Comn	Short	Exploratory	
Support other regulations that protect wildlife and vegetation	Comprehensive Plan	Environmental Stewardsf	Environmental Advisory Comn	Short	Aspirational	
Pursue development of ordinances, education and awareness programs to improve air quality, such as smoking regulations and support of public transportation.	Comprehensive Plan	Environmental Stewardsf	Environmental Advisory Comn	Short	Aspirational	
Continue efforts to seal the low areas of the back side of the island, including drainage systems, to reduce tidal intrusion into the highland of the island.	Comprehensive Plan	Stormwater Managementf	Public Services and Facilities (Short	Maintenance	
Support efforts to build berms along the back side of the island to keep abnormally high tides from entering the highland areas, including elevating the multiuse path adjacent to Waterway Boulevard.	Comprehensive Plan	Stormwater Managementf	Public Services and Facilities (Medium	Actionable	\$\$\$
Support OCRM in administering measures that protect marshes on the backside of the island.	Comprehensive Plan	Environmental Stewardsf	Environmental Advisory Comn	Short	Maintenance	
Support beach renourishment projects	Comprehensive Plan	Beach Preservation	Beach Preservation Committe	Long	Actionable	
Encourage private dune restoration projects	Comprehensive Plan	Beach Preservation	Beach Preservation Committe	Short	Actionable	
Explore the possibility of establishing a commemorative exhibit online and/or in one of the City's buildings including the collection of historic photographs and documents compiled in 2003 for the City's 50PPthF	Comprehensive Plan	Quality of Life	Planning Commission	Long	Exploratory	\$\$\$
Investigate the possibility of permanently marking sites of historical significance on the island and ensuring their preservation	Comprehensive Plan	Quality of Life	Planning Commission	Long	Exploratory	
The City should continue to work with County officials to ensure optimum EMS services on the island and maintain basic medical emergency services through the Fire Department	Comprehensive Plan	Public Safety	Public Safety Committee	Short	Maintenance	
Develop and implement a method of distribution for the Disaster Preparedness Plan	Comprehensive Plan	Public Safety	Public Safety Committee	Short	Actionable	
The City should meet periodically with the Water and Sewer Commission and strive for a "team approach" to addressing waste water and water issues that will arise in future years	Comprehensive Plan	Environmental Stewardsf	Environmental Advisory Comn	Short	Aspirational	
In conjunction with the Water and Sewer Commission, the City should take those steps appropriate to facilitate additional sewer service on the island	Comprehensive Plan	Environmental Stewardsf	Environmental Advisory Comn	Short	Aspirational	
Develop a plan to improve alternate modes of transportation on the island including bikeways and sidewalks with an emphasis on installing sidewalks and improving pedestrian safety	Comprehensive Plan	Public Safety	Public Safety Committee	Long	Actionable	
Inventory unimproved rights-of-way extending to the creeks or marsh for possible use as passive recreational sites not unlike the street ends in the Old Village of Mount Pleasant along the Harbor	Comprehensive Plan	Quality of Life	Public Services and Facilities (Medium	Actionable	
Consider additional improvements to the Recreation Center to offer a wider spectrum of leisure activities for pre-school children to senior adults	Comprehensive Plan	Quality of Life	Public Services and Facilities (Medium	Exploratory	
The City should continue to support tree-planting programs along streets and develop a long-term plan which prioritizes streets and identifies the types of trees to be used	Comprehensive Plan	Environmental Stewardsf	Environmental Advisory Comn	Short	Actionable	
Consider additional ways of reducing littering on the island	Comprehensive Plan	Environmental Stewardsf	Environmental Advisory Comn	Short	Exploratory	
Consider ways of restricting the construction of structures at the ends of docks working in conjunction with the OCRM and the U.S. Corps of Engineers	Comprehensive Plan	Environmental Stewardsf	Planning Commission	Short	Exploratory	
Encourage new or replacement electrical distributing systems to be constructed underground	Comprehensive Plan	Quality of Life	Public Services and Facilities (Long	Actionable	
Seek funding sources to place electrical distributing systems underground	Comprehensive Plan	Quality of Life	Public Services and Facilities (Long	Actionable	
Continue to work closely with County and State agencies to properly maintain existing storm water and drainage systems. Clearly delineate the City's areas of responsibility and take appropriate action where fe.	Comprehensive Plan	Stormwater Managementf	Public Services and Facilities (Short	Maintenance	

Consider funding options, including grants and NPDES fees to address drainage problems.	Comprehensive Plan	Stormwater Management	Public Services and Facilities (Short	Exploratory	
The City should continue to work to remain in compliance with the National Pollution Discharge Elimination System Phase II as a small MS4 community	Comprehensive Plan	Stormwater Management	Public Services and Facilities (Short	Maintenance	
Periodically review and update the Baseline Facilities Assessment of the Marina complex to ensure the conditions of the facilities are monitored for safety, physical condition, and utility	Comprehensive Plan	Public Safety	Public Safety Committee	Short	Actionable	
Set aside funds for future year maintenance and capital improvements that will be required to protect and maximize the City's investment in all real properties	Comprehensive Plan	General Administration	General Administration	Short	Actionable	\$\$\$
Aggressively pursue grants or other external funding sources that will enhance the safety, environmental conditions, facilities, or other features of all real properties	Comprehensive Plan	General Administration	General Administration	Short	Actionable	
Develop plans for continuous maintenance/repair of various City buildings such as City Hall, the Public Safety building, Fire Station 2, the Recreation Center and the Public Works building	Comprehensive Plan	General Administration	General Administration	Long	Actionable	\$\$\$
Encourage imaginative proposals using City properties that will enhance revenues to the City	Comprehensive Plan	General Administration	General Administration	Long	Exploratory	
Constantly monitor compliance with existing lease terms to ensure revenues are consistent	Comprehensive Plan	General Administration	General Administration	Short	Actionable	
Continue to track construction trends including: the number of houses demolished each year and the number of square feet, bedrooms and bathrooms of new houses	Comprehensive Plan	General Administration	Planning Commission	Short	Actionable	
Continually assess ordinances which limit the size and width of houses and the amount of impervious surface on the island	Comprehensive Plan	Quality of Life	Planning Commission	Medium	Exploratory	
Amend the zoning ordinance to limit the density of development allowed on property not serviced by a public wastewater system	Comprehensive Plan	Quality of Life	Planning Commission	Medium	Actionable	
Educate the owners of septic systems in the proper maintenance and encourage owners to have their septic systems checked and serviced according to established standards	Comprehensive Plan	Environmental Stewardship	Environmental Advisory Comn	Short	Actionable	
Monitor the amount of impervious surface on residential lots. The City defines impervious material as any material through which water cannot penetrate, including buildings, roads, and parking lots	Comprehensive Plan	Quality of Life	Planning Commission	Medium	Actionable	
Make appropriate amendments to the zoning ordinance which reflect the goals and strategies of the Comprehensive Plan	Comprehensive Plan	Quality of Life	Planning Commission	Short	Exploratory	
Develop plans and policies which use public improvements to prevent or mitigate adverse impacts of commercial development upon residential properties	Comprehensive Plan	Quality of Life	Planning Commission	Long	Actionable	
Evaluate and continue to improve the drainage system to alleviate the problems in those areas that drain poorly	Comprehensive Plan	Stormwater Management	Public Services and Facilities (Long	Actionable	\$\$\$
Include funding in the 2023-2024 budget to initiate a comprehensive traffic study for the island to improve traffic flow and reduce congestion. This study should done in close collaboration with the SCDOT staff t	Comprehensive Plan	Public Safety	Public Safety Committee	Medium	Actionable	\$\$\$
Evaluate the lane configuration of the Isle of Palms Connector to identify more efficient and safer alternatives	Comprehensive Plan	Public Safety	Public Safety Committee	Short	Actionable	
Evaluate the intersection of the Isle of Palms Connector and Palm Boulevard to determine in an alternative design and/or phasing could increase operational efficiency	Comprehensive Plan	Public Safety	Public Safety Committee	Short	Actionable	
Evaluate the Charleston County Park and municipal parking lots traffic routing, payment, and ticketing to identify more efficient methods for ingress and egress	Comprehensive Plan	Public Safety	Public Safety Committee	Short	Actionable	
Evaluate providing real-time beach parking space availability data to the public to improve efficiency for ingress and egress for beach visitors	Comprehensive Plan	Public Safety	Public Safety Committee	Short	Actionable	
Continually assess stop sign locations on the island to determine proper and legal placement	Comprehensive Plan	Public Safety	Public Safety Committee	Short	Actionable	
Ensure an adequate number of speed limit signs on all streets to encourage compliance and improve safety	Comprehensive Plan	Public Safety	Public Safety Committee	Short	Actionable	
Develop a plan to improve alternate modes of transportation on the island including bikeways, golf carts and low speed vehicle facilities and sidewalks while improving pedestrian safety	Comprehensive Plan	Public Safety	Public Safety Committee	Medium	Actionable	
Encourage appropriate measures including signs, traffic restrictions and parking restrictions	Comprehensive Plan	Public Safety	Public Safety Committee	Short	Actionable	
Encourage appropriate measures to collect accurate traffic counts including the installation of new hardware at the key points of ingress and egress of the island	Comprehensive Plan	Public Safety	Public Safety Committee	Short	Actionable	
Identify problem areas and appropriate funding sources	Comprehensive Plan	Public Safety	Public Safety Committee	Short	Actionable	
Expand the system of bike lanes and walking paths	Comprehensive Plan	Public Safety	Public Safety Committee	Long	Actionable	\$\$\$

\$ (< \$50,000)

\$\$ (\$50,000 - \$100,000)

\$\$\$ (> \$100,000)

Short (< 1 year)

Medium (1 - 5 years)

Long (> 5 years)

Aspirational: long-term vision with no clear policy or action recommended

Exploratory: policy or action to explore and consider further

Actionable: clear policy or budgetary action that can be taken immediately

Maintenance: upkeep of existing practices, policies, or activities