



## **Public Services & Facilities Committee**

9:00 a.m., Tuesday, October 7, 2025

1207 Palm Boulevard

City Hall Council Chambers

### **Public Comment:**

All citizens who wish to speak during the meeting must email their first and last name, address and topic to Nicole DeNeane, City Clerk, at [nicoled@iop.net](mailto:nicoled@iop.net) no later than **3:00 p.m. the day before the meeting**. Citizens may also provide written public comment here:

<https://www.iop.net/public-comment-form>

### **Agenda**

1. **Call to order** and acknowledgment that the press and the public have been duly notified of the meeting in accordance with the Freedom of Information Act.
2. **Citizens' Comments** – All comments have a time limit of three (3) minutes.
3. **Approval of previous meeting's minutes** – September 1, 2025
4. **Marina Tenants' Comments**
5. **Presentations – none**
6. **Old Business**
  - a. Discussion of next steps regarding the marina parking lot
  - b. Update on Waterway Boulevard project
  - d. Update on beach projects
  - e. Discussion of Public Services & Facilities-related matrix recommendations
7. **New Business-**
  - a. Update on RFB for beach debris removal services
  - b. Update on transition of dumpster service away from city
  - c. Discussion of Public Works equipment marking pavement
8. **Miscellaneous Business**

Next meeting date: Wednesday, November 5, 2025 at 9:00am
9. **Adjournment**



**Public Services & Facilities Committee Meeting  
9:00am, Tuesday, September 1, 2025  
1207 Palm Boulevard, Isle of Palms, SC and  
broadcasted live on YouTube: <https://www.youtube.com/user/cityofisleofpalms>**

**MINUTES**

**1. Call to Order**

Present: Council members Pierce and Miars

Absent: Council Member Hahn

Staff Present: Administrator Kerr, Director Pitts, Asst. Director Asero, Director Ferrell

**2. Citizen's Comments -- none**

**3. Approval of Previous Meeting's Minutes – August 12, 2025**

**MOTION:** Council Member Pierce made a motion to approve the minutes of the August 12, 2025 meeting. Council Member Miars seconded the motion. The motion passed unanimously.

**4. Marina Tenants' Comments – none**

**5. Presentations -- none**

**6. Old Business**

**A. Discussion of next steps regarding the marina parking lot**

Administrator Kerr reported that Brian Kitz is working on the revised lease. A meeting with Islander 71 is being scheduled. After the lease is finalized, the next step will be the conceptual layout plan for the adjacent parking lot, which includes making decisions on materials and surfacing to create biddable documents. The primary challenges identified are construction costs and securing funding.

Council members Miars and Pierce asked for clarity about the vote Council took a few years ago to secure 16 resident-only parking spaces adjacent to the greenspace.

Administrator Kerr added that the project timeline will be determined by the amount of work Council approves. He said there is \$190,000 in the budget for greenspace work, but that will not be enough to cover the costs of the project. He also believes the project will likely span over two seasons.

**B. Update on USTA Grant**

Director Ferrell said the grant will allow them to use the funds for one court dedicated to tennis. She will move forward with having the work done and seek reimbursement upon completion. Once done, there will be one mixed use court and one dedicated tennis court.

**C. Update on Waterway Boulevard project**

Administrator Kerr reported that while meetings with the contractor have been positive, the project is on hold. An easement release from one property owner near the intersection of Intercoastal and Waterway remains outstanding. The owner wants to have a third-party engineer review the plans.

Wild Dunes ownership has mandated that the entire project be halted until this single easement is secured. Council Member Miars said the delays are “absurd.” Administrator Kerr added that the property owner does not share the City’s sense of urgency in getting the project done.

The local golf course managers have expressed a need for the path to be playable by the end of October and have been very flexible with the City.

Draft easement agreements with the required legal language have been received from the Wild Dunes' attorney, but they have not yet been formally executed. This was expected, but the project-wide hold was not.

It was also noted that the property owner's hesitation may be linked to an outdated project design that showed an elevated path. Efforts are underway to clarify the current plan with the owner.

**D. Update on beach projects**

Administrator Kerr said that the order from BCM to place sandbags was granted late Friday. An order for bags has been placed, with the first shipment of 200 bags arriving tomorrow.

The contractor is scheduled to begin installation on Thursday, starting at the Breach Inlet end due to scheduling logistics. The contractor will work through the weekend, expecting to complete the Breach Inlet section by next Thursday before moving operations to the Wild Dunes end, likely starting at Seascape. The contractor can place approximately 75 bags per day. Ocean Club is excluded from this work and will need to arrange for its own protection.

Council Member Pierce would like an update on the status of the bag installation and their effectiveness at the Council workshop next week.

Regarding the USACE project, Administrator Kerr reported the contractor has moved to the third spoils area. Sand was expected to begin being delivered from this site at the end of last week, but there is no confirmation that this has started.

Given the current pace, with the project not yet halfway complete (approximately 200,000 of a planned 550,000-600,000 cubic yards pumped), it is possible the project could extend well into the spring.

A separate Army Corps project to dredge the Intracoastal Waterway is also set to begin, potentially involving a different contractor. This could result in two sand-pumping operations occurring simultaneously. The new dredging method is expected to be much faster. Council Member Pierce requested regular updates on the project timeline and quantities pumped.

**E. Discussion of Office 365 Migration**

Administrator Kerr said the work order for this project was placed 2 months ago. A meeting about the migration has been scheduled for this week. Council Member Pierce requested regular updates on the status of the migration.

**F. Discussion of Public Services & Facilities-related matrix recommendations**

This discussion will be deferred to the next meeting.

**7. New Business**

**Discussion of memorial for Malcolm Burgis Plaza**

Once the proof is approved, a temporary plaque marking the plaza will be placed which staff believes will be by the end of the week. The permanent marker is expected to take 4-6 weeks. A ceremony will be scheduled once the permanent marker is placed.

**8. Miscellaneous Business**

The next regular meeting of the Public Services & Facilities Committee will be Tuesday, October 7, 2025 at 9am.

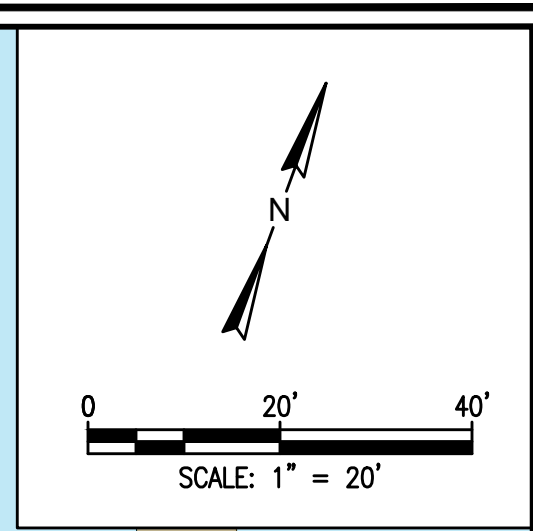
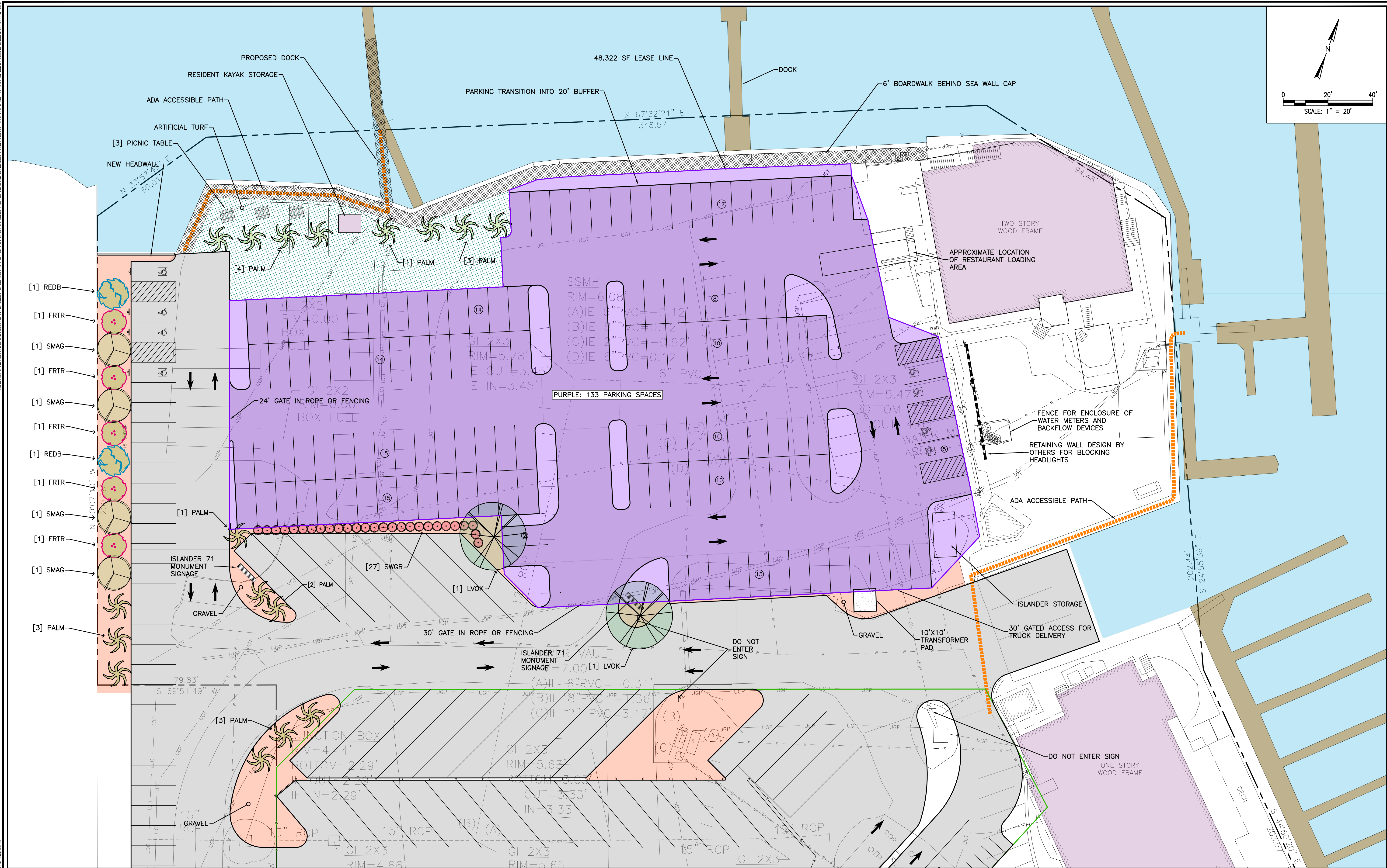
**9. Adjournment**

Council Member Pierce made a motion to adjourn and Council Member Miars seconded the motion. The meeting was adjourned at 9:40am.

Respectfully submitted,  
Nicole DeNeane  
City Clerk



THIS DRAWING AND ASSOCIATED CONTENTS ARE INSTRUMENTS OF SERVICE AND THE PROPERTY OF CLINE ENGINEERING, INC. AND SHALL NOT BE USED OR REPRODUCED IN ANY OTHER MANNER THAN AUTHORIZED BY CLINE ENGINEERING, INC. IN WRITING.  
PLOT DATE: 8/22/23 11:58 AM FILE LOCATION: \\S3022567-242600\PROJECTS\242600\242600-001.DWG



#### PLANT CODES

FRTR	FRINGE TREE
LVOK	LIVE OAK TREE
PALM	PALM TREE
REDB	RED BUD TREE
SMAG	SWEETBAY MAGNOLIA TREE
SWGR	SWEETGRASS



PICNIC TABLE

COUNTRY CASUAL TEAK  
LARCHMONT PICNIC TABLE  
ITEM #4879  
71"W x 63.5"D x 28.75"H, TEAK

DISCLAIMER  
INFORMATION DEPICTED IN THIS PLAN IS PROVIDED FOR GENERAL REFERENCE PURPOSES ONLY AND IS NOT TO BE CONSTRUED AS A SURVEY OR LEGAL DOCUMENT. ERRORS FROM NON-COINCIDENCE OF FEATURES FROM DIFFERENT SOURCES MAY BE PRESENT. CLINE ENGINEERING PLAN MAKES EVERY REASONABLE EFFORT TO ENSURE THAT THE INFORMATION PROVIDED HEREIN IS CURRENT AND ACCURATE. HOWEVER, CLINE ENGINEERING PROVIDES NO WARRANTIES, EXPRESSED OR IMPLIED, CONCERNING THE ACCURACY, COMPLETENESS, RELIABILITY, OR SUITABILITY OF THIS DATA FOR ANY PARTICULAR USE OR PURPOSE. CLINE ENGINEERING ASSUMES NO LIABILITY WHATSOEVER ASSOCIATED WITH THE USE OR MISUSE OF SUCH DATA.

- CONCEPT DESIGN NOTES
1. PLAN IS NOT FOR CONSTRUCTION.
  2. ALL DIMENSIONS TO BE CONSIDERED APPROXIMATE AND TO BE VERIFIED BY A SURVEYOR.
  3. LAYOUT TO BE VERIFIED AND REVIEWED BY LOCAL PLANNING OFFICE FOR COMPLIANCE TO ZONING CODE.

REV	DATE	DESCRIPTION	DRAWN	APPROV

**CLINE**  
ENGINEERING  
PROFESSIONAL DESIGN CONSULTING

TOP MASTER PLAN  
**SITE PLAN EXHIBIT**  
50 41ST AVENUE  
ISLE OF PALMS, SOUTH CAROLINA

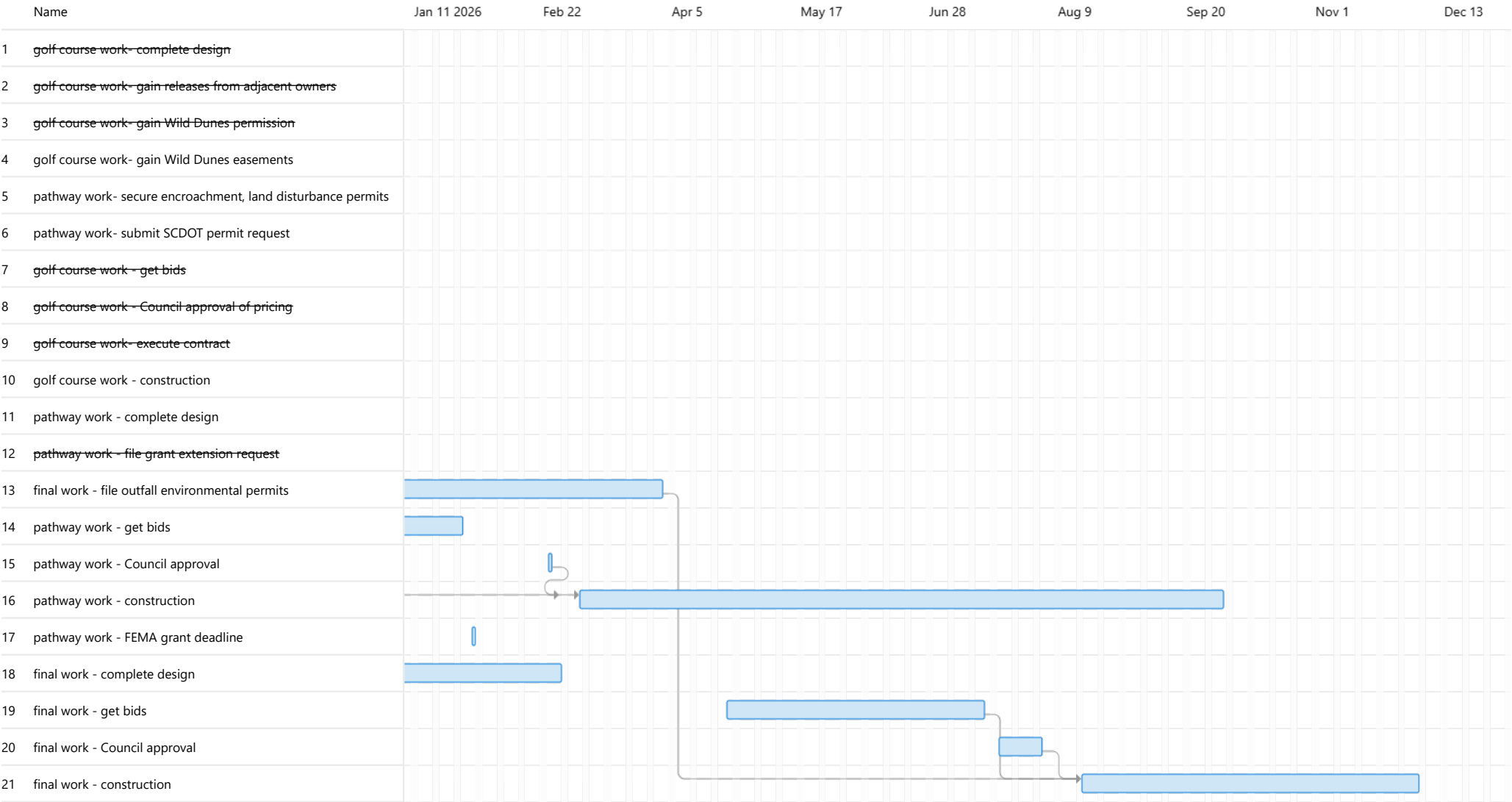
PROJECT MANAGER	MDL
DRAWN BY	AKR
PROJECT DATE	AUGUST 2023
DWG NUMBER	242600-001
SHEET NUMBER	
Q	



## Waterway flood barrier project



Waterway flood barrier project



Project name	Waterway flood barrier project
Plan owner	Douglas"" Kerr""
Project start date	7/15/2025
Project finish date	12/4/2026
Duration	408 days
% complete	44%
Exported on	10/3/2025

Task number	Outline number	Name	Phase	Start	Finish	Duration	Bucket	% complete	Depends on	Dependents (after)
1	1	golf course work- complete design	1	7/15/2025	7/21/2025	5 days	Administration	100%		
2	2	golf course work- gain releases from adjacent owners	1	7/1/2025	8/1/2025	24 days	Permitting	100%		
3	3	golf course work- gain Wild Dunes permission	1	5/14/2025	7/31/2025	57 days	Administration	100%		9FS
4	4	golf course work- gain Wild Dunes easements	1	7/1/2025	7/31/2025	23 days	Administration	50%		5FS
5	5	pathway work- secure encroachment, land disturbance permits	2	8/1/2025	10/24/2025	61 days	Permitting	75%	4FS	16FS
6	6	pathway work- submit SCDOT permit request	2	8/15/2025	11/7/2025	61 days	Permitting	75%		
7	7	golf course work - get bids	1	7/1/2025	8/22/2025	39 days	Construction	100%		
8	8	golf course work - Council approval of pricing	1	7/22/2025	8/26/2025	26 days	Administration	100%		9FS
9	9	golf course work- execute contract	1	8/27/2025	8/28/2025	2 days	Construction	100%	8FS, 3FS	
10	10	golf course work - construction	1	8/28/2025	10/22/2025	40 days	Construction	75%		
11	11	pathway work - complete design	2	7/15/2025	9/30/2025	56 days	Administration	75%		
12	12	pathway work - file grant extension request	2	8/15/2025	9/10/2025	19 days	Administration	100%		
13	13	final work - file outfall environmental permits	3	9/1/2025	4/1/2026	153 days	Permitting	20%		21FS
14	14	pathway work - get bids	2	1/1/2026	1/26/2026	18 days	Administration	0%		
15	15	pathway work - Council approval	2	2/24/2026	2/24/2026	1 day	Administration	0%		16FS
16	16	pathway work - construction	2	3/6/2026	10/1/2026	150 days	Construction	0%	15FS, 5FS	
17	17	pathway work - FEMA grant deadline	2	1/30/2026	1/30/2026	1 day	Permitting	0%		
18	18	final work - complete design	3	7/15/2025	2/27/2026	164 days	Permitting	50%		
19	19	final work - get bids	3	4/23/2026	7/15/2026	60 days	Administration	0%		21FS
20	20	final work - Council approval	3	7/21/2026	8/3/2026	10 days	Administration	0%		21FS
21	21	final work - construction	3	8/17/2026	12/4/2026	80 days	Construction	0%	20FS, 19FS, 13FS	

Recommendations	Source	Category/Focus Area	Column2	Assigned Committee	Initiative2	Rec #	Recommendation3	Status
Explore installing “in-pavement lighting” on existing crosswalks on Palm Boulevard for increased visibility to advancing cars with brighter paint to designate pedestrian space.	Community Enrichment	Public Safety		Public Services and Facilities Committee	Infrastructure Improvements	26	Explore installing “in-pavement lighting” on existing crosswalks on Palm Boulevard for increased visibility to advancing cars with brighter paint to designate pedestrian space.	
Increase the width of the existing sidewalk on Palm Boulevard landside between 21st and 40th and trim all overgrown vegetation. Consider marking cross streets to indicate pedestrian crossing.	Community Enrichment	Public Safety		Public Services and Facilities Committee	Infrastructure Improvements	29	Increase the width of the existing sidewalk on Palm Boulevard landside between 21st and 40th and trim all overgrown vegetation. Consider marking cross streets to indicate pedestrian crossing.	
Revisit wayfinding signage plan and improve throughout the island.	Community Enrichment	Public Safety		Public Services and Facilities Committee	Communications	34	Revisit wayfinding signage plan and improve throughout the island.	Currently installing new wayfinding signs
Clean, better mark, maintain, increase signage and possibly enlarge existing bike lanes on Palm Boulevard from 14th Avenue to Breach Inlet.	Community Enrichment	Public Safety		Public Services and Facilities Committee	Cycling Enhancements	35	Clean, better mark, maintain, increase signage and possibly enlarge existing bike lanes on Palm Boulevard from 14th Avenue to Breach Inlet.	Public services is currently cleaning bike lanes
Assess the Recreation Center property and facilities to determine the options for expansion or a reconfiguration to support demand and growth in program participation, adequate indoor & outdoor storage, and diverse programming that can include educational events, public meetings, the arts, and library.	Community Enrichment	Quality of Life		Public Services and Facilities Committee	Infrastructure Improvements	52	Assess the Recreation Center property and facilities to determine the options for expansion or a reconfiguration to support demand and growth in program participation, adequate indoor & outdoor storage, and diverse programming that can include educational events, public meetings, the arts, and library.	
Explore partnerships with Wild Dunes, Charleston County Parks, and the IOP Exchange Club to utilize their facilities in the off-peak season (e.g. pool activities and youth golf lessons for courses at Wild Dunes, use of Exchange Club dock for programming	Community Enrichment	Quality of Life		Public Services and Facilities Committee	Recreational Offerings	53	Explore partnerships with Wild Dunes, Charleston County Parks, and the IOP Exchange Club to utilize their facilities in the off-peak season (e.g. pool activities and youth golf lessons for courses at Wild Dunes, use of Exchange Club dock for programming	
Upgrade Recreation Center interior spaces. Give primary attention to cabinetry, fans, audio visual, sound and lighting equipment, storage, paint, and ceiling repairs. Include equipment necessary to live stream and record events held in the Magnolia Room. Install charging stations and workspaces in the lobby.	Community Enrichment	Quality of Life		Public Services and Facilities Committee	Infrastructure Improvements	54	Upgrade Recreation Center interior spaces. Give primary attention to cabinetry, fans, audio visual, sound and lighting equipment, storage, paint, and ceiling repairs. Include equipment necessary to live stream and record events held in the Magnolia Room. Install charging stations and workspaces in the lobby.	
Explore upgrades to outdoor spaces at the Recreation Center and Mayor Carmen R. Bunch Park. • Utilize native plants. Add swings, benches, picnic tables, etc. • Create a community garden at the Recreation Center. • Expand Recreation Center's outdoor shelter to support diverse programming and events, providing fans, electricity, and a stage for music. • Explore options for providing an expanded electrical grid throughout the Recreation Center property to support large community events and athletics. • Create a WIFI hotspot at the Recreation Center and its surrounding property.	Community Enrichment	Quality of Life		Public Services and Facilities Committee	Recreational Offerings	55	Explore upgrades to outdoor spaces at the Recreation Center and Mayor Carmen R. Bunch Park. • Utilize native plants. Add swings, benches, picnic tables, etc. • Create a community garden at the Recreation Center. • Expand Recreation Center's outdoor shelter to support diverse programming and events, providing fans, electricity, and a stage for music. • Explore options for providing an expanded electrical grid throughout the Recreation Center property to support large community events and athletics. • Create a WIFI hotspot at the Recreation Center and its surrounding property.	Irrigation and electrical installation - in process - Added fencing and signs
Consider using existing City properties to increase public access to the water for paddle sports, fishing, etc., or more passive uses (benches/swings). Update indoor and outdoor facilities to create a safe and welcoming space for teens. Consider comfy furniture in the Recreation Center lobby, umbrella tables with charging stations, updated porch furniture, rock wall, and/or ropes course.	Community Enrichment	Quality of Life		Public Services and Facilities Committee	Infrastructure Improvements	56	Consider using existing City properties to increase public access to the water for paddle sports, fishing, etc., or more passive uses (benches/swings). Update indoor and outdoor facilities to create a safe and welcoming space for teens. Consider comfy furniture in the Recreation Center lobby, umbrella tables with charging stations, updated porch furniture, rock wall, and/or ropes course.	
Assess equipment needs to support growing athletic programs.	Community Enrichment	Quality of Life		Public Services and Facilities Committee	Recreational Offerings	59	Assess equipment needs to support growing athletic programs.	
Identify unmet recreation needs for which people often leave the island (e.g. youth golf lessons, lacrosse, flag football, gym, year-round swimming, indoor tennis/pickleball, minigolf). Evaluate if there is sufficient demand to expand programming or facilities.	Community Enrichment	Quality of Life		Public Services and Facilities Committee	Recreational Offerings	60	Identify unmet recreation needs for which people often leave the island (e.g. youth golf lessons, lacrosse, flag football, gym, year-round swimming, indoor tennis/pickleball, minigolf). Evaluate if there is sufficient demand to expand programming or facilities.	
Develop programming connected to the water (e.g. kayaking, water safety, beach exercise, paddle boarding, paddle board yoga, eco tours, seining, SCUBA).	Community Enrichment	Quality of Life		Public Services and Facilities Committee	Recreational Offerings	61	Develop programming connected to the water (e.g. kayaking, water safety, beach exercise, paddle boarding, paddle board yoga, eco tours, seining, SCUBA).	
Sustain the speaker series by identifying willing presenters with unique skills, knowledge, and life experiences.	Community Enrichment	Quality of Life		Public Services and Facilities Committee	Recreational Offerings	63	Sustain the speaker series by identifying willing presenters with unique skills, knowledge, and life experiences.	
Explore opportunities for teen programming (e.g. babysitter/CPR course, video game tournament, coffee house karaoke/open mic night, community service projects, rock climbing).	Community Enrichment	Quality of Life		Public Services and Facilities Committee	Recreational Offerings	64	Explore opportunities for teen programming (e.g. babysitter/CPR course, video game tournament, coffee house karaoke/open mic night, community service projects, rock climbing).	
Explore bringing in food trucks on youth sports nights and/or once a week on a weeknight from Memorial Day to Labor Day.	Community Enrichment	Quality of Life		Public Services and Facilities Committee	Recreational Offerings	65	Explore bringing in food trucks on youth sports nights and/or once a week on a weeknight from Memorial Day to Labor Day.	
Make our special events autism- and neurodivergent-friendly by offering a calming space/tent and/or special sensory-friendly times to attend.	Community Enrichment	Quality of Life		Public Services and Facilities Committee	Recreational Offerings	66	Make our special events autism- and neurodivergent-friendly by offering a calming space/tent and/or special sensory-friendly times to attend.	
Explore potential of fee based reservations of key facilities.	Community Enrichment	Quality of Life		Public Services and Facilities Committee	Revenue & Funding	67	Explore potential of fee based reservations of key facilities.	
Feature activities and events more prominently in monthly City e-newsletter with departments cross-posting special events on social media. Consider creating a monthly email or e-newsletter just for the Recreation Center to share upcoming key events and deadlines with links to the online registration portal.	Community Enrichment	Quality of Life		Public Services and Facilities Committee	Communications	68	Feature activities and events more prominently in monthly City e-newsletter with departments cross-posting special events on social media. Consider creating a monthly email or e-newsletter just for the Recreation Center to share upcoming key events and deadlines with links to the online registration portal.	
Use Sunnie to communicate about more than special events (e.g. youth sports registration dates, new classes, educational programs); add an option for people to specifically sign up for Recreation Department alerts.	Community Enrichment	Quality of Life		Public Services and Facilities Committee	Communications	69	Use Sunnie to communicate about more than special events (e.g. youth sports registration dates, new classes, educational programs); add an option for people to specifically sign up for Recreation Department alerts.	
Ensure staff are facilitating two-way communication on social media by responding to comments and inquiries within 24 hours.	Community Enrichment	Quality of Life		Public Services and Facilities Committee	Communications	70	Ensure staff are facilitating two-way communication on social media by responding to comments and inquiries within 24 hours.	
Create a separate calendar for Recreation Center activities on City website and enable a click feature for users to add to their personal calendars.	Community Enrichment	Quality of Life		Public Services and Facilities Committee	Communications	71	Create a separate calendar for Recreation Center activities on City website and enable a click feature for users to add to their personal calendars.	
Coordinate with Wild Dunes and Wild Dunes Homeowners Associations (HOAs) to share monthly/quarterly updates on programs and events through their communication platforms.	Community Enrichment	Quality of Life		Public Services and Facilities Committee	Communications	72	Coordinate with Wild Dunes and Wild Dunes Homeowners Associations (HOAs) to share monthly/quarterly updates on programs and events through their communication platforms.	
Emphasize “we are more than just sports and exercise classes.” in communications.	Community Enrichment	Quality of Life		Public Services and Facilities Committee	Communications	73	Emphasize “we are more than just sports and exercise classes.” in communications.	
Invest more in online marketing of Recreation Department opportunities to ensure residents are fully aware of what is available to them through the City	Community Enrichment	Quality of Life		Public Services and Facilities Committee	Communications	74	Invest more in online marketing of Recreation Department opportunities to ensure residents are fully aware of what is available to them through the City	
Pinpoint and generate more funding for the remaining major projects, including grant opportunities, to cover estimated costs (for drainage projects)	Community Enrichment	Stormwater Management		Public Services and Facilities Committee	Stormwater Management	131	Pinpoint and generate more funding for the remaining major projects, including grant opportunities, to cover estimated costs (for drainage projects)	working on additional drainage and timelines (20th, Myrtle for examples)
Put more projects in the pipeline, rather than 1-2 at a time (for drainage projects)	Community Enrichment	Stormwater Management		Public Services and Facilities Committee	Stormwater Management	132	Put more projects in the pipeline, rather than 1-2 at a time (for drainage projects)	currently we have more than 2 major projects and also doing minor drainage improvements (example tide valves , 2nd Avenue)
Work with energy provider to accelerate already requested projects.	Community Enrichment	Quality of Life		Public Services and Facilities Committee	Infrastructure Improvements	138	Work with energy provider to accelerate already requested projects.	Engaged with Dominion
Develop master plan for converting all remaining areas to underground lines.	Community Enrichment	Quality of Life		Public Services and Facilities Committee	Infrastructure Improvements	139	Develop master plan for converting all remaining areas to underground lines.	Engaged with Dominion
Consider transitioning to a new system with stable, covered trash receptacles to prevent trash from turning into litter.	Community Enrichment	Environmental Stewardship and Management		Public Services and Facilities Committee	Litter Management	156	Consider transitioning to a new system with stable, covered trash receptacles to prevent trash from turning into litter.	Installed new 96 gallon city wide Toters with lids
Update the outdated 2013 Stantec Beach Visitor Parking Study.	Community Enrichment	Seasonal Impacts (Traffic and Parking)		Public Services and Facilities Committee	Parking Management	162	Update the outdated 2013 Stantec Beach Visitor Parking Study.	
Engage Charleston County for help with the increasing expenses of tourism resulting from population growth, increased demand for beach access, and the finite land mass of the island.	Community Enrichment	Seasonal Impacts (Traffic and Parking)		Public Services and Facilities Committee	Revenue & Funding	163	Engage Charleston County for help with the increasing expenses of tourism resulting from population growth, increased demand for beach access, and the finite land mass of the island.	
Develop a plan for the city to acquire residential roads from the South Carolina Department of Transportation (“SCDOT”).	Community Enrichment	Seasonal Impacts (Traffic and Parking)		Public Services and Facilities Committee	Infrastructure Improvements	165	Develop a plan for the city to acquire residential roads from the South Carolina Department of Transportation (“SCDOT”).	

Determine the number of spaces and, where appropriate, formally add the following free spaces to the Parking Plan when the LCBMP is updated: •Public right of way adjacent to the IOP Post Office •Unregulated public right of way at IOP Recreation Center on Hartnett Boulevard between 28th and 29th Avenues • Designate a certain number of spaces for IOP Recreation Center use ensure adequate spaces for visitors and residents using the Recreation Center.							Determine the number of spaces and, where appropriate, formally add the following free spaces to the Parking Plan when the LCBMP is updated: •Public right of way adjacent to the IOP Post Office •Unregulated public right of way at IOP Recreation Center on Hartnett Boulevard between 28th and 29th Avenues • Designate a certain number of spaces for IOP Recreation Center use ensure adequate spaces for visitors and residents using the Recreation Center.	
	Community Enrichment	Seasonal Impacts (Traffic and Parking)		Public Services and Facilities Committee	Parking Management	166		
Hire a consultant to develop a plan which may include:•Adjusting parking footprint that optimizes both the number of spaces in the LCBMP and traffic flow •Registered/monitored parking along state highway - if feasible and supported by the community - which satisfies state law and does not add to the traffic or congestion issues in the neighborhoods •Free beach parking in a city lot to encourage parking at Front Beach		Seasonal Impacts (Traffic and Parking)		Public Services and Facilities Committee	Parking Management	167	Hire a consultant to develop a plan which may include:•Adjusting parking footprint that optimizes both the number of spaces in the LCBMP and traffic flow •Registered/monitored parking along state highway - if feasible and supported by the community - which satisfies state law and does not add to the traffic or congestion issues in the neighborhoods •Free beach parking in a city lot to encourage parking at Front Beach	
Request SCDOT fulfill its commitment to replace the “temporary” concrete markers on the landward side of Palm Boulevard with aesthetically-pleasing, low-profile markers.		Seasonal Impacts (Traffic and Parking)		Public Services and Facilities Committee	Parking Management	169	Request SCDOT fulfill its commitment to replace the “temporary” concrete markers on the landward side of Palm Boulevard with aesthetically-pleasing, low-profile markers.	
Clearly delineate the spaces on the Seaward side of Palm Boulevard.		Seasonal Impacts (Traffic and Parking)		Public Services and Facilities Committee	Parking Management	170	Clearly delineate the spaces on the Seaward side of Palm Boulevard.	
Continue maintaining the 4' chalk parking line along Palm Boulevard each week, and ideally reapply after a significant rain event during high season.		Seasonal Impacts (Traffic and Parking)		Public Services and Facilities Committee	Parking Management	171	Continue maintaining the 4' chalk parking line along Palm Boulevard each week, and ideally reapply after a significant rain event during high season.	
Continue supporting the SCDOT-approved Parking Plan, especially the residential parking zones.		Seasonal Impacts (Traffic and Parking)		Public Services and Facilities Committee	Parking Management	172	Continue supporting the SCDOT-approved Parking Plan, especially the residential parking zones.	
Adjusting parking footprint that optimizes both the number of spaces in the LCBMP and traffic flow		Seasonal Impacts (Traffic and Parking)		Public Services and Facilities Committee	Parking Management	180	Adjusting parking footprint that optimizes both the number of spaces in the LCBMP and traffic flow	
Registered/monitored parking along state highway - if feasible and supported by the community - which satisfies state law and does not add to the traffic or congestion issues in the neighborhoods		Seasonal Impacts (Traffic and Parking)		Public Services and Facilities Committee	Parking Management	181	Registered/monitored parking along state highway - if feasible and supported by the community - which satisfies state law and does not add to the traffic or congestion issues in the neighborhoods	
Free beach parking in a city lot to encourage parking at Front Beach		Seasonal Impacts (Traffic and Parking)		Public Services and Facilities Committee	Parking Management	182	Free beach parking in a city lot to encourage parking at Front Beach	
Annual review of identified “opportunity areas.”		Seasonal Impacts (Traffic and Parking)		Public Services and Facilities Committee	Forecasting	183	Annual review of identified “opportunity areas.”	
Consider a “Text to Park” model.		Seasonal Impacts (Traffic and Parking)		Public Services and Facilities Committee	Communications	186	Consider a “Text to Park” model.	
Utilize technology to monitor parking availability.		Seasonal Impacts (Traffic and Parking)		Public Services and Facilities Committee	Communications	187	Utilize technology to monitor parking availability.	
Communicate parking alternatives, such as the Beach Shuttle, when approaching full capacity.		Seasonal Impacts (Traffic and Parking)		Public Services and Facilities Committee	Communications	188	Communicate parking alternatives, such as the Beach Shuttle, when approaching full capacity.	
Establish a parking webpage that offers interactive maps and clear information including, but not limited to, available parking lots and parking areas, number of spaces, prices (seasonal and regular, if applicable), and violations.		Seasonal Impacts (Traffic and Parking)		Public Services and Facilities Committee	Communications	189	Establish a parking webpage that offers interactive maps and clear information including, but not limited to, available parking lots and parking areas, number of spaces, prices (seasonal and regular, if applicable), and violations.	
Implement elevated tide and emergency operations.	Sea Level Rise Adaptation	Stormwater Management		Public Services and Facilities Committee	Public Safety Enhanc	190	Implement elevated tide and emergency operations.	
Begin design and permitting of outfall improvements recommended as part of the Phase 4 Masterplan	Sea Level Rise Adaptation	Stormwater Management		Public Services and Facilities Committee	Stormwater Managen	193	Begin design and permitting of outfall improvements recommended as part of the Phase 4 Masterplan	happening now, based on need & budget
Begin implementation of vegetated berms for perimeter protection.	Sea Level Rise Adaptation	Stormwater Management		Public Services and Facilities Committee	Stormwater Managen	196	Begin implementation of vegetated berms for perimeter protection.	
Finalize outfall improvements recommended as part of the Phase 4 Masterplan.	Sea Level Rise Adaptation	Stormwater Management		Public Services and Facilities Committee	Stormwater Managen	202	Finalize outfall improvements recommended as part of the Phase 4 Masterplan.	happening now, based on need & budget
Install tide gates as recommended.	Sea Level Rise Adaptation	Stormwater Management		Public Services and Facilities Committee	Stormwater Managen	203	Install tide gates as recommended.	ongoing installations
Begin installation of underground storage solutions.	Sea Level Rise Adaptation	Stormwater Management		Public Services and Facilities Committee	Stormwater Managen	204	Begin installation of underground storage solutions.	
Complete Waterway Boulevard enhancements.	Sea Level Rise Adaptation	Stormwater Management		Public Services and Facilities Committee	Infrastructure Improv	206	Complete Waterway Boulevard enhancements.	currently in process
Finish construction of all required perimeter protection.	Sea Level Rise Adaptation	Stormwater Management		Public Services and Facilities Committee	Infrastructure Improv	211	Finish construction of all required perimeter protection.	currently in process
Complete additional stormwater projects recommended as part of the Phase 4 Masterplan.	Sea Level Rise Adaptation	Stormwater Management		Public Services and Facilities Committee	Stormwater Managen	212	Complete additional stormwater projects recommended as part of the Phase 4 Masterplan.	happening now, based on need & budget
While the needs of island residents should be paramount, efforts should be made to adjust the level of City services to meet the needs of seasonal visitors as well	Comprehensive Plan	Seasonal Impacts (Traffic and Parking)		Public Services and Facilities Committee	Forecasting	217	While the needs of island residents should be paramount, efforts should be made to adjust the level of City services to meet the needs of seasonal visitors as well	
Initiate comprehensive study by an outside agency to determine economic impact of visitors on recreational facilities, City services and infrastructure	Comprehensive Plan	Seasonal Impacts (Traffic and Parking)		Public Services and Facilities Committee	Forecasting	225	Initiate comprehensive study by an outside agency to determine economic impact of visitors on recreational facilities, City services and infrastructure	
Continue efforts to seal the low areas of the back side of the island, including drainage systems, to reduce tidal intrusion into the highland of the island.	Comprehensive Plan	Stormwater Management		Public Services and Facilities Committee	Stormwater Management	235	Continue efforts to seal the low areas of the back side of the island, including drainage systems, to reduce tidal intrusion into the highland of the island.	currently in process
Support efforts to build berms along the back side of the island to keep abnormally high tides from entering the highland areas, including elevating the multiuse path adjacent to Waterway Boulevard.	Comprehensive Plan	Stormwater Management		Public Services and Facilities Committee	Stormwater Management	236	Support efforts to build berms along the back side of the island to keep abnormally high tides from entering the highland areas, including elevating the multiuse path adjacent to Waterway Boulevard.	currently in process
Inventory unimproved rights-of-way extending to the creeks or marsh for possible use as passive recreational sites not unlike the street ends in the Old Village of Mount Pleasant along the Harbor	Comprehensive Plan	Quality of Life		Public Services and Facilities Committee	Recreational Offerings	247	Inventory unimproved rights-of-way extending to the creeks or marsh for possible use as passive recreational sites not unlike the street ends in the Old Village of Mount Pleasant along the Harbor	
Consider additional improvements to the Recreation Center to offer a wider spectrum of leisure activities for pre-school children to senior adults	Comprehensive Plan	Quality of Life		Public Services and Facilities Committee	Recreational Offerings	248	Consider additional improvements to the Recreation Center to offer a wider spectrum of leisure activities for pre-school children to senior adults	
Encourage new or replacement electrical distributing systems to be constructed underground	Comprehensive Plan	Quality of Life		Public Services and Facilities Committee	Infrastructure Improvements	252	Encourage new or replacement electrical distributing systems to be constructed underground	Engaged with Dominion
Seek funding sources to place electrical distributing systems underground	Comprehensive Plan	Quality of Life		Public Services and Facilities Committee	Revenue & Funding	253	Seek funding sources to place electrical distributing systems underground	
Continue to work closely with County and State agencies to properly maintain existing storm water and drainage systems. Clearly delineate the City's areas of responsibility and take appropriate action where feasible	Comprehensive Plan	Stormwater Management		Public Services and Facilities Committee	Stormwater Management	254	Continue to work closely with County and State agencies to properly maintain existing storm water and drainage systems. Clearly delineate the City's areas of responsibility and take appropriate action where feasible	Robert with PW engaged with other agencies
Consider funding options, including grants and NPDES fees to address drainage problems.	Comprehensive Plan	Stormwater Management		Public Services and Facilities Committee	Revenue & Funding	255	Consider funding options, including grants and NPDES fees to address drainage problems.	we use NPDES for projects where applicable
The City should continue to work to remain in compliance with the National Pollution Discharge Elimination System Phase II as a small MS4 community	Comprehensive Plan	Stormwater Management		Public Services and Facilities Committee	Environmental Sustainability	256	The City should continue to work to remain in compliance with the National Pollution Discharge Elimination System Phase II as a small MS4 community	We are and will continue to follow these guidelines
Evaluate and continue to improve the drainage system to alleviate the problems in those areas that drain poorly	Comprehensive Plan	Stormwater Management		Public Services and Facilities Committee	Stormwater Management	270	Evaluate and continue to improve the drainage system to alleviate the problems in those areas that drain poorly	currently in process

\$ (< \$50,000)  
\$\$ (\$50,000 - \$100,000)  
\$\$\$ (> \$100,000)

Short (< 1 year)  
Medium (1 - 5 years)  
Long (> 5 years)

Aspirational: long-term vision with no clear policy or action recommended  
Exploratory: policy or action to explore and consider further  
Actionable: clear policy or budgetary action that can be taken immediately  
Maintenance: upkeep of existing practices, policies, or activities

## City of Isle of Palms, South Carolina

### Requests for Bids RFB 2025-09

#### Beach Sanitation and Garbage Collection Services

In compliance with the City of Isle of Palms procurement ordinance, the City is accepting bids for beach garbage collection and disposal services. The successful bidder will be responsible for servicing approximately 142 containers located on the island.

#### Scope and Requirements

- The scope includes servicing 56 beach access paths with 142 96-gallon Toter garbage cans from Breach Inlet to 57<sup>th</sup> Ave and Wild Dunes-58<sup>th</sup> Grand Pavilion, Sea Grove, Beachwood East, Dune's crest, Beach Club Villas 1 and 2, Mariner's Walk.
- Isle of Palms roll out carts to be pulled from **dune location or down beach paths to streetside** for service at 25 locations:
  - Front beach commercial district: 16 IOP roll carts on the center island to be serviced.
  - Municipal lot B: 18 IOP roll carts to be serviced.
  - Municipal lot A 4: IOP roll carts to be serviced.
- Bidders should refer to Exhibit I for the list of containers to be serviced and frequency of collection.
- Contract start date: October 29, 2025

#### Insurance Requirements

Contractors shall not commence work under the agreement until they have obtained the insurance required and shall keep such insurance in force during the entire term of the agreement. All coverage shall be with insurance companies licensed and admitted to conduct business in the State of South Carolina.

Premiums with respect to such policies required to be carried by the Contractor shall be paid by the Contractor.

The contractor shall carry liability insurance in such amounts as shown below, pay all the premiums thereon when due, and cause such insurance to name the City as additional insured thereunder:

- a) Worker's Compensation Insurance, including Employers' Liability Coverage, in accordance with all applicable statutes of the State of South Carolina.
- b) Commercial General Liability Insurance, on an "Occurrence Basis" with limits of liability not less than \$1,000,000.00 per occurrence, and \$2,000,000.00 in annual aggregate. Aggregate limit requirements can be met by using an umbrella policy, and/or excess policy, or a combination of both.
- c) Automobile Liability, including South Carolina At-Fault Coverages, with limits of liability not less than \$1,000,000.00 per occurrence combined single limit for Bodily Injury, and Property Damage. Coverage shall include all owned vehicles, all non-owned vehicles, and all hired vehicles. Additional Insured, Commercial General Liability, and Automobile Liability, as described above, should include an endorsement stating the City of Isle of Palms as an additional insured.

- A performance bond is required. The amount shall be 100% of the annual contract value, renewed annually.
- The City will consider a 3-year contract, with a two-year extension option if both parties agree.
- Contract terms and conditions will be negotiated upon selection of the winning bid. All contract terms and conditions will be subject to review and approval of the City of Isle of Palms.
- The contractor may begin service at 7:00 a.m.
- Bidders should include three (3) references with their bid.
- The city reserves the right to modify the scope of work and contract start date.

Bids should be submitted to the following:

**Douglas Kerr**  
**City Administrator**  
**City of Isle of Palms**  
**1207 Palm Boulevard**  
**Post Office Box 508, Isle of Palms, South Carolina 29451**

**Deadline for Submissions: 2:00 p.m., Thursday, October 9, 2025**

Bids will be received at 1207 Palm Boulevard, Isle of Palms, South Carolina 29451 in a sealed envelope. Sealed envelopes must be clearly marked "RFB 2025-06, Beach garbage collection and disposal sanitation services" and include one (1) hard copy and one (1) electronic copy saved to a USB flash drive. It will be the responsibility of the proposers to verify receipt by the City.

Bids will be evaluated using, but not limited to, the following criteria: overall proposal suitability, a clear and organized proposal, price competitiveness, quality, and timeliness of previous work performed. Bidders will be evaluated on their experience, qualifications, and references.

Contract terms and conditions will be negotiated upon selection of the winning bidder for this RFB. All contractual terms and conditions will be subject to review by the City of Isle of Palms.

Bids may be delivered by hand or by mail, but no proposal shall be considered which is not actually received by the City at the place, date, and time appointed by the City and the City shall not be responsible for any failure, misdirection, delay or error resulting from the selection by any bidder of any means of delivery. Proprietary and/or Confidential Information: Your proposal is a public document under the South Carolina

Freedom of Information Act (FOIA), except as to information that may be treated as confidential, as an exception to disclosure under the FOIA. If you cannot agree to this standard, please do not submit your bid. All information that is to be treated as confidential and/or proprietary must be CLEARLY identified, and each page containing confidential and/or proprietary information, in whole or in part, must be stamped and/or denoted as CONFIDENTIAL, in bold, in a font of at least 12-point type, in the upper right-hand corner of the page. All information not so denoted and identified will be subject to disclosure by the City.



Bidders acknowledge and agree that the City will not be liable for any costs, expenses, losses, damages (including damages for loss of anticipated profit) or liabilities incurred by the respondent or any member of the respondent's organization as a result of, or arising out of, submitting a bid, negotiating changes, or due to the City's acceptance or non-acceptance of the proposal or the rejection of any and all proposals. Proposers are responsible for the submission of accurate, adequate, and clear descriptions of the information requests. Neither the issuance of the RFB, preparation and submission of a response, nor the subsequent receipt and evaluation of any response by the City of Isle of Palms will commit the City to award a contract to any respondent, even if all the requirements in the RFB have been met.

**Bidders must have or be able to procure an Isle of Palms Business License.**

The City of Isle of Palms reserves the right to accept or reject any and all proposals, or any parts thereof; to waive irregularities or informalities in any proposal received to allow the proposal to be considered; to negotiate terms and conditions with Proposers; and to select a Bidder or to cancel in whole or in part this RFB, if it is in the best interest of the City to do so. Those bids determined not to be in compliance with the provisions of this RFB and the applicable laws and/or regulations will not be processed.

By signing its bid, Proposer certifies that it will comply with the applicable requirements of Title 8, Chapter 14 of the South Carolina Code of Laws and agrees to provide the City upon request any documentation required to establish either: (a) that Title 8, Chapter 14 is inapplicable both to Bidder and its subcontractors or sub-subcontractors; or (b) that Bidder and its subcontractors or sub-subcontractors are in compliance with Title 8, Chapter 14. Pursuant to Section 8-14-60, "A person who knowingly makes or files any false, fictitious, or fraudulent document, statement, or report pursuant to this chapter is guilty of a felony and, upon conviction, must be fined within the discretion of the court or imprisoned for not more than five years, or both." Bidder agrees to include in any contracts with its sub-contractors language requiring its subcontractors to (a) comply with the applicable requirements of Title 8, Chapter 14 and (b) include in their contracts with sub-subcontractors, language requiring the sub-subcontractors to comply with the applicable requirements of Title 8, Chapter 14

Bids shall be evaluated based on cost per frequency of dumping and number of cans and location. **Exhibit A** Also important in the evaluation will be service delivery to the City and/or service delivery references from other contracting entities for which the contractor has performed services. The successful bidder must enter into a contract with the city. Contract terms and conditions will be negotiated upon selection of the winning bid. All contract terms and conditions will be subject to review and approval of the City of Isle of Palms.

## City of Isle of Palms, South Carolina

### Requests for Bids

#### RFB 2025-09

#### Beach Sanitation and Garbage Collection Services

##### Instructions to Bidders

In submitting a proposal, the bidder represents that he or she has visited all proposed service locations and determined the nature of the work and the difficulties attending execution of the work, including those bearing upon access, transportation, disposal, fluctuations in frequency of service, uncertainties of weather, and all other matters which can in any way affect the work under the contract for services.

Questions concerning the nature and scope of work should be directed to:

Robert Asero, Public Works Assistant Director (843) 981-4026

#### BID FOR BEACH SANITATION AND GARBAGE COLLECTION SERVICES

Submitted by:

Contractor Name: \_\_\_\_\_

Authorized By: \_\_\_\_\_ Title: \_\_\_\_\_

Address: \_\_\_\_\_

City, State, Zip Code \_\_\_\_\_

Email \_\_\_\_\_

Telephone Number \_\_\_\_\_

The above-named Contractor hereby proposes to provide collection and disposal services for beach garbage cans as indicated on the schedule provided by the City of Isle of Palms included in this package as EXHIBIT I.

In providing this service, the above-named Contractor proposes to charge the City of Isle of Palms \$\_\_\_\_\_ per year.

If this bid is approved and accepted by the Isle of Palms City Council, the above-named contractor understands that it will be expected to enter into a contract with the City of Isle of Palms.

BY: \_\_\_\_\_ (Signature)

\_\_\_\_\_ (Typed name)

\_\_\_\_\_ (Title)

\_\_\_\_\_ (Date)

STATE OF SOUTH CAROLINA

COUNTY OF \_\_\_\_\_

Subscribed and sworn to before me \_\_\_\_\_, a Notary

Public in and for the jurisdiction aforesaid, on this \_\_\_\_\_ day of

\_\_\_\_\_, 2024. My Commission Expires: \_\_\_\_\_

## EXHIBIT 1

### Beach Garbage Collection

Corrals would be installed street-side and on ocean-side beach access paths, where city roll carts would be housed inside.



**YELLOW** = 2 GARBAGE CORRALS - 1 STREETSIDE AND 1 LANDWARD OF PRIMARY DUNE

**RED** = EMERGENCY ACCESS    **BLUE** = ADA ACCESS

### Location of Trash Cans

Access Path Number	# of cans at street	# of cans off beach but behind dune	Additional notes
1A	1	0	
Breach Inlet	2	1	
2A	1	0	
3	1	1	
3A	1	0	
4	1	0	
4A	1	0	
5	1	1	Emergency access
6	1	0	
6A	1	0	
7	1	1	
7A	1	0	
8	1	0	
8A	1	0	
9	1	1	ADA access
Front beach; restroom area	2 streetside	2 at the showers 6 end of boardwalk 2 behind restrooms	Public restroom building
Commercial area	16 cans on Center median		
Sea Cabins	2	2 at the front of boardwalk	
Municipal Lot A-B	22 cans at entrances, exit, and midway between front and back of lot		
14 <sup>th</sup>	1 Streetside	0	
21	1	2 at the boardwalk	
23	1	0	
25	3	2	Emergency access
26	1	0	
26A	1	0	New boardwalk
27	1	0	
28	1	0	
29	1	0	
30	1	0	
30A	1	0	

31	1	1	
32A	1	0	
33A	1	0	
34A	2	1	ADA access
35A	1	0	
36A	1	1	
37A	1	0	
38A	1	0	
40	0	0	
41	1	0	
42	2	2	ADA access
43	1	0	
44	1	0	
45	1	0	
46	2	1	New boardwalk/ADA access
49	1	0	
50	1	0	
51	1	0	
52	1	1	New boardwalk
53	1	1	Emergency access
57	1	0	

#### WILD DUNES SERVICE LOCATIONS

58 <sup>th</sup>		3	At sidewalk
Grand Pavillion		6	Beachside
Sea Grove		1	Up walkway
14 Beachwood E		1	Up walkway
Seagrove		1	Up walkway
Dunes Crest		2	Up walkway
Beach Club Villas		1	Up walkway
Beach Club Villas 2 and Property Owners		3	Property owners' beach path
Mariners Walk		1	Up walkway

**Schedule and Frequency**

The contractor shall remove garbage from all beach receptacles with the following frequency:

October - March	One Pick Up per Week
April through the last weekend in May	Three Pick-Ups per Week (Sun, Tue, Fri)
Memorial Day through Monday of Labor Day in September	Seven Pick-Ups per Week (Daily)
Remainder of September	Three Pick-Ups per Week (Sun, Tue, Fri)



## Breach-3rd

08/29/2025



Parcels





## 3A-5th

08/29/2025

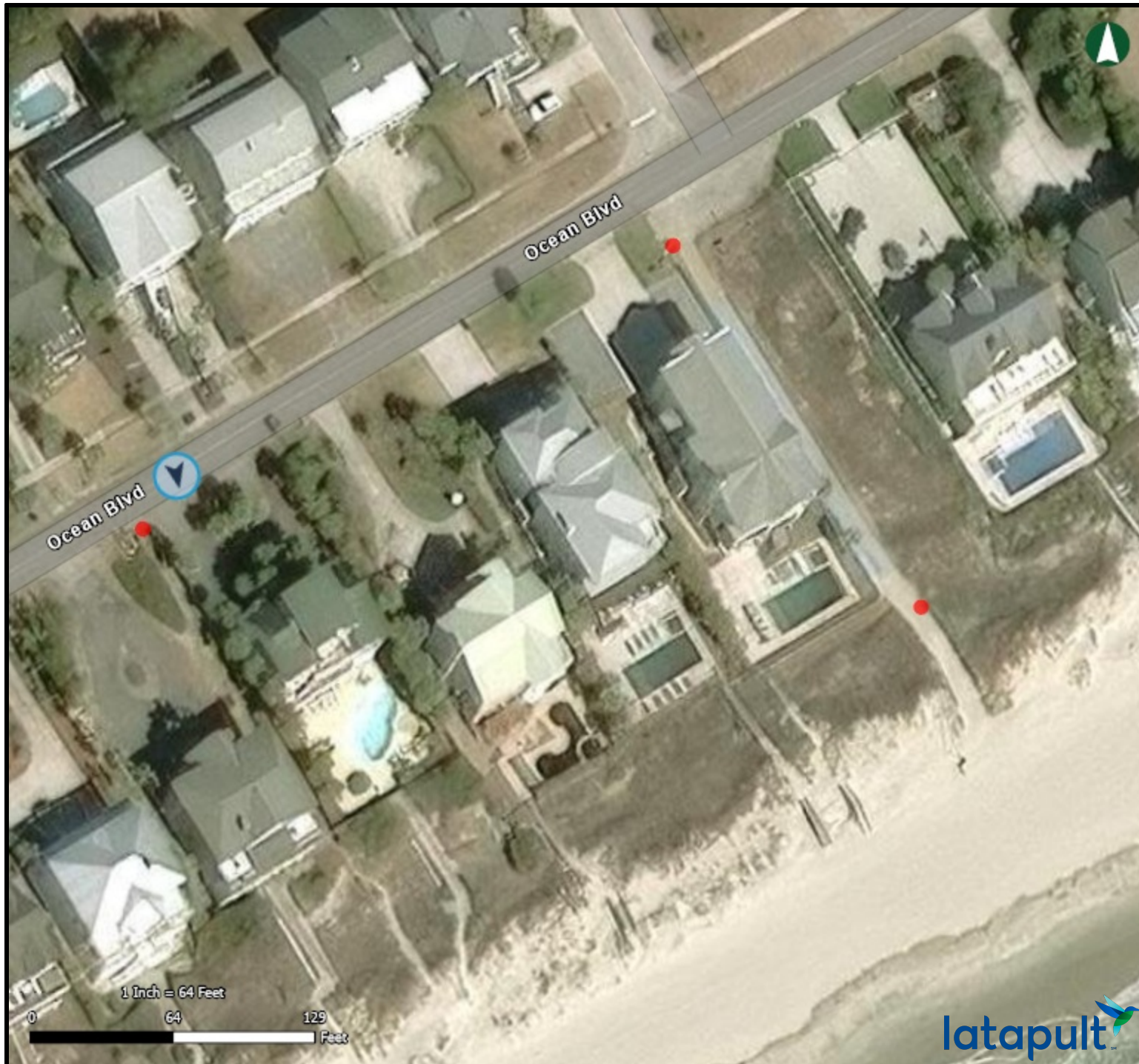




## 6th-8th

08/29/2025





latapult 

**8A-9th**

08/29/2025

latapult 





## Front Beach Center island

09/02/2025







latapult

## Municipal lot A

08/29/2025





latapult 

## Municipal lot B

08/29/2025

latapult 





## Front beach restrooms

08/29/2025





## 21st-25th Palm Blvd.

09/02/2025







latapult 

**26-26A-27th Palm  
Blvd.**

09/02/2025

latapult 





## 28th-29th-30-30A Palm Blvd.

09/02/2025





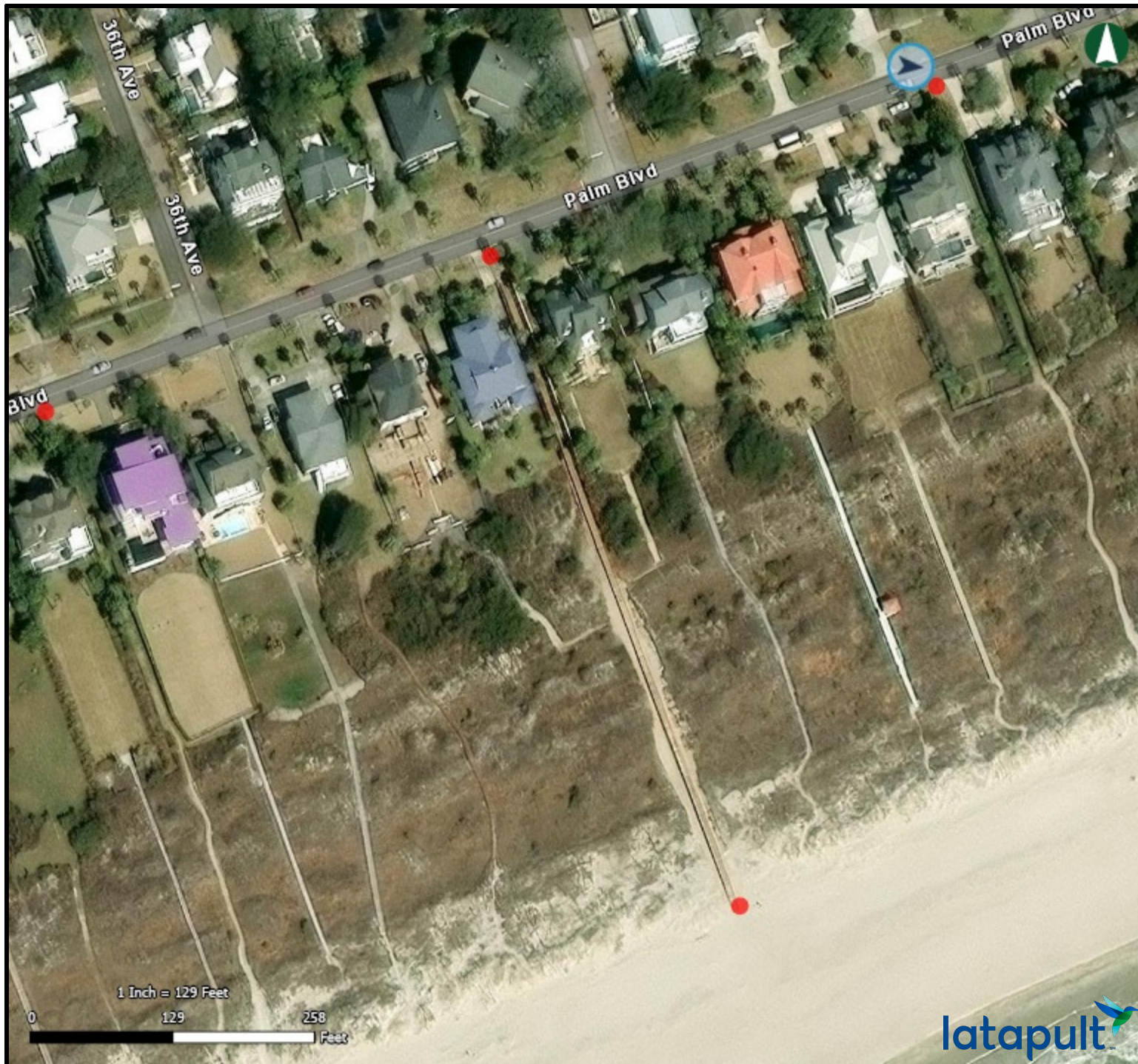


latapult

31st-32-33-34th

09/02/2025





## 35-36-37 Palm Blvd

09/02/2025





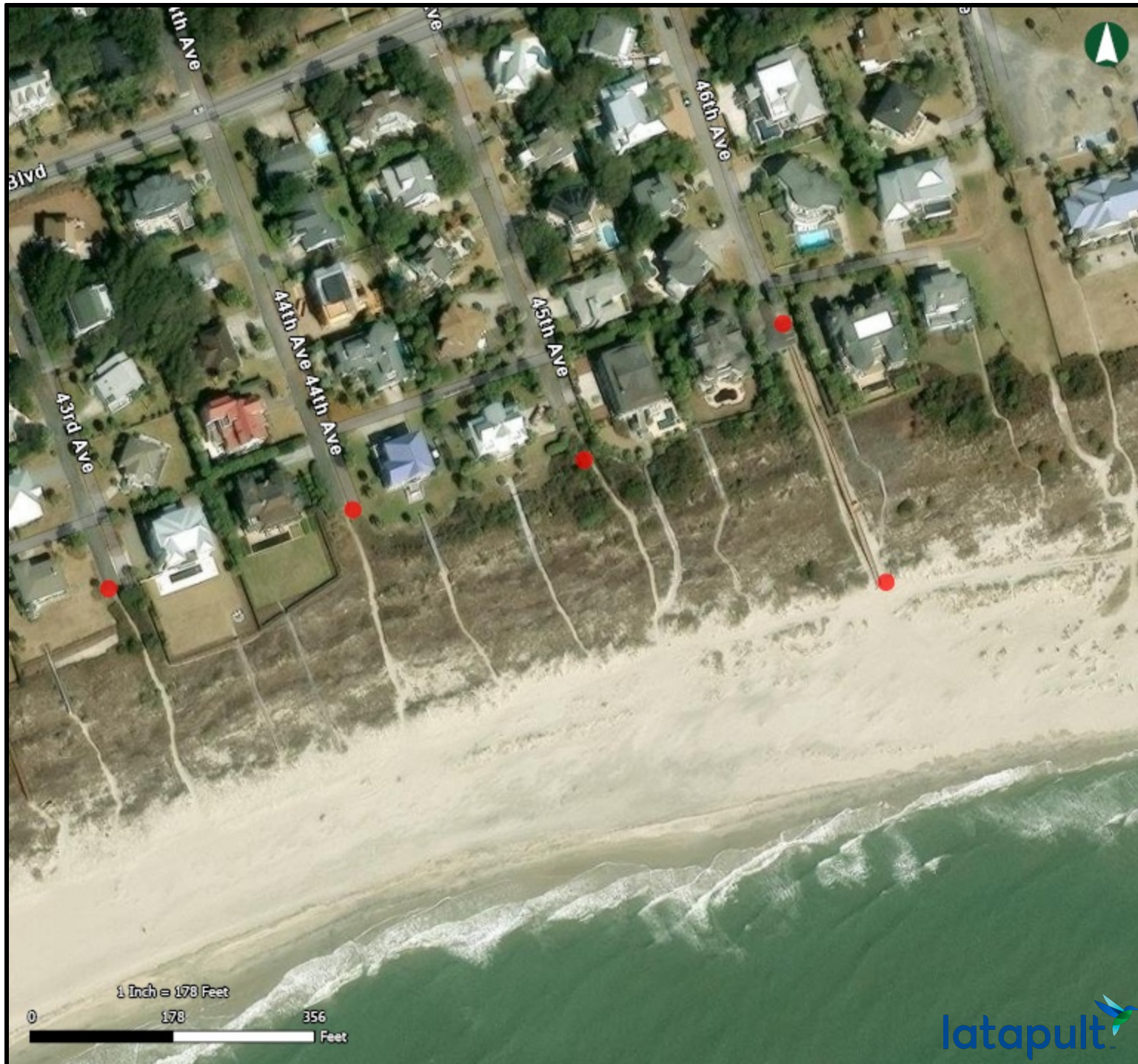


## 38-41-42 Palm Blvd

09/02/2025







**43-44-45-46**

09/02/2025







latapult 

**49-50-51-52-53**

09/02/2025

latapult 





latapult 

**57th**

09/02/2025

latapult 





## WD beach trash cans

04/21/2025







## WD beach trash cans

07/28/2025

☐ Parcels

Grand Pavilion ?







latapult<sup>SM</sup>

## Grand Pavillion

08/07/2025

☐ Parcels

latapult<sup>SM</sup>





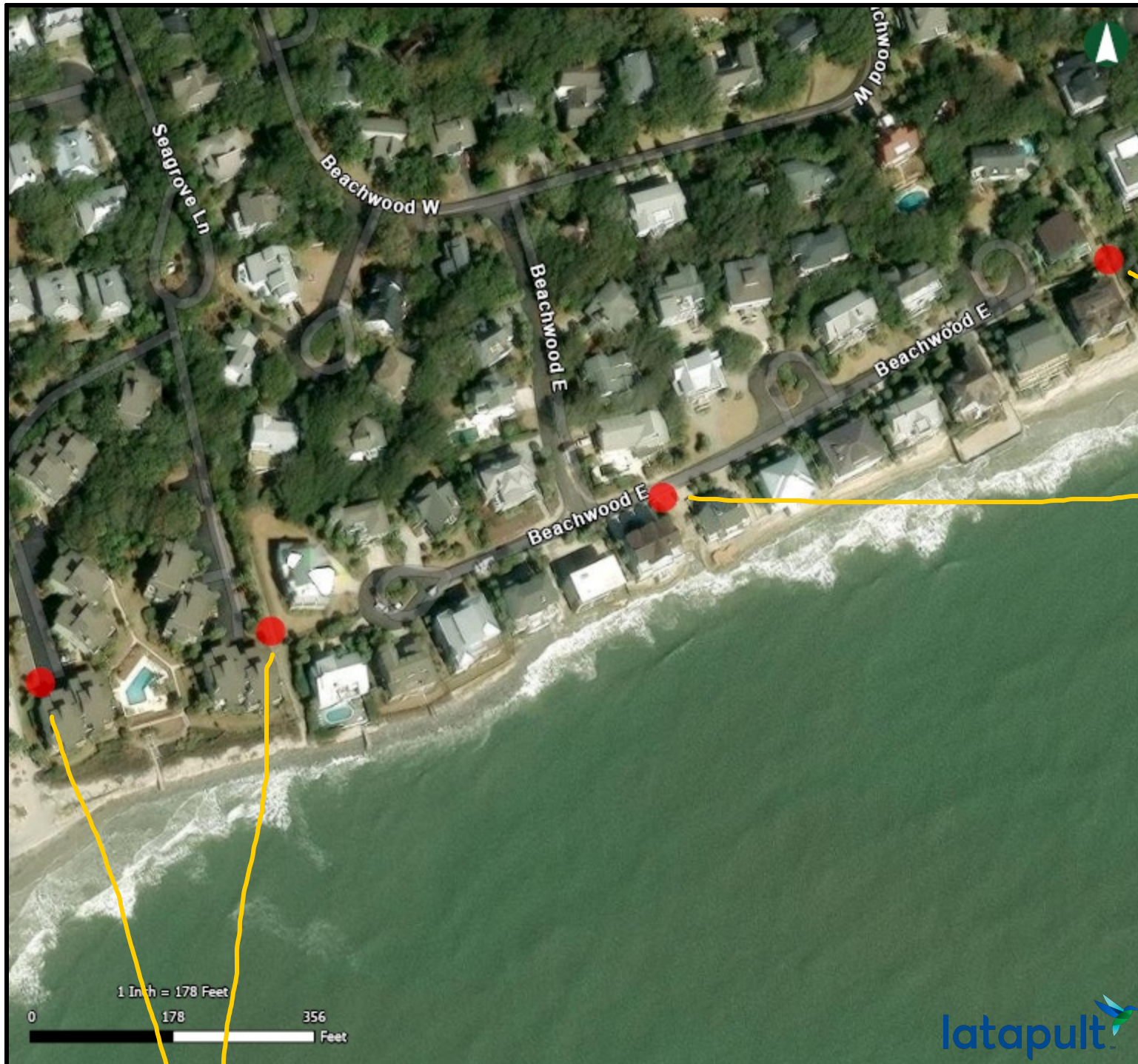
latapult 

## WD beach trash cans 1

04/21/2025

latapult 





**WD-SG-BE-DC**

07/28/2025

Beachwood E and  
Dunes crest

Beachwood East



This map was created using Lata, ult | [www.latapult.com](http://www.latapult.com) | Bigger Data Faster Maps Stronger Decisions

Seagrove and Beachwood E





## WD beach trash cans 2

04/21/2025

Property owners  
Beach Club Villas 1



This map was created using Latapult | [www.latapult.com](http://www.latapult.com) | Bigger Data Faster Maps Stronger Decisions

Dunes Crest  
Beachwood E

Dunes Crest and BC Villas 1





## WD beach trash cans 3

04/21/2025

Optional Summer Dunes  
Port O Call



This map was created using Latapult | [www.latapult.com](http://www.latapult.com) | Bigger Data Faster Maps Stronger Decisions

Beach Club Villas 2 and Mariners Walk


Mariners Walk





## WD beach trash cans 4

07/28/2025

 Parcels

Mariners Walk

Beach club villas 2  
and Mariners Walk

