

**City of Isle of Palms**  
**Department of Public Works**  
**August 2012**  
**Donnie Pitts- Director**

**Sanitation:**

23.04 tons of C&D were transported to the Bees Ferry landfill.

**Landscaping/Road Maintenance:**

Serviced the pooper-scoopers 4 times.

Cleaned the beach of debris on August 1st, 3<sup>rd</sup>, 8<sup>th</sup>, 15<sup>th</sup>, 22nd and 30th.

Mowed the rights-of-way from 21<sup>st</sup> to 41<sup>th</sup> Ave., 41<sup>st</sup> Ave. two times.

Mowed the lots on 13<sup>th</sup> Ave.

Mowed the Building Dept. lot 2 times.

Cleaned the sidewalk from 10<sup>th</sup> Ave. to 13<sup>th</sup> Ave.

Installed lights at the Connector boards.

Cleaned the Breach inlet sidewalk.

Trimmed the tree overhang on Cameron Blvd.

Straightened the street signs around the island.

Repaired the boardwalk at the Sea Cabins.

**Storm Water/Drainage :**

Eadies Drain and Vac. initiated Year Three of the maintenance plan and are in the process of removing the vegetation from the open ditches on the island.

Pumped water on 46<sup>th</sup> Ave. and 51<sup>st</sup> Ave. after heavy rains on August 29, 30, 31 and 9/1/12.

**SCDOT:**

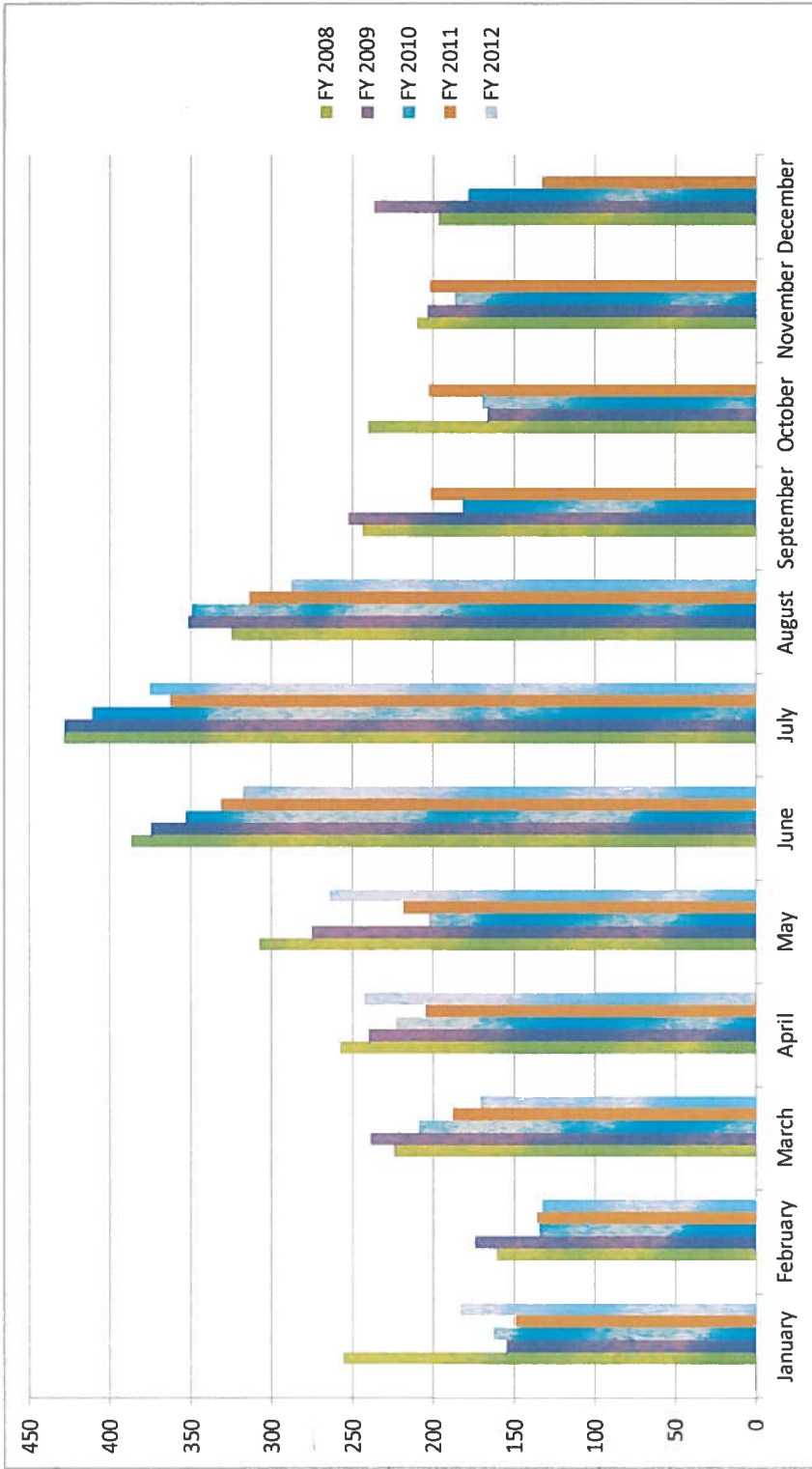
SCDOT cleaned the sidewalks on Palm Blvd.

**FY 2008      FY 2009      FY 2010      FY 2011      FY 2012**

<b>January</b>	255.58	154.9	163.04	149.35	183.11
<b>February</b>	161.17	174.42	134.49	136.13	132.82
<b>March</b>	224.81	238.66	208.97	187.91	171.14
<b>April</b>	257.63	240.06	223.43	204.82	242.75
<b>May</b>	307.39	275.02	202.79	218.69	264.14
<b>June</b>	386.63	374.58	352.9	331.02	317.8
<b>July</b>	428.42	427.97	410.92	362.95	375.29
<b>August</b>	324.77	351.25	349.31	313.33	287.83
<b>September</b>	243.67	252.55	181.61	201.55	
<b>October</b>	240.38	166.9	169.78	202.8	
<b>November</b>	210.16	203.71	186.79	202.01	
<b>December</b>	197.12	236.66	178.23	133.17	
<b>TOTAL</b>	3237.73	3096.68	2762.26	2643.73	1974.88

2x week

denotes single stream recycle



**Tonnage**

<b>Month</b>	<b><u>2011</u></b>	<b><u>2012</u></b>
January	91.1	100.71
February	121.6	106.55
March	167.97	189.88
April	219.85	174.22
May	240.28	178.9
June	159.84	173.42
July	161.45	151.13
August	164.59	163.35
September	186.62	
October	162.16	
November	128.58	
December	118.22	
<b>TOTAL</b>	<b>1922.26</b>	<b>1238.16</b>

