

City of Isle of Palms
Department of Public Works
February 2013
Donnie Pitts- Director

Sanitation:

22.06 tons of C&D were transported to the Bees Ferry landfill.
A total of 17.50 overtime hours were incurred to pump water from the
46th, 50th and 51st streets.

Landscaping/Road Maintenance:

Serviced the pooper-scoopers 2 times.
Installed and/or straightened several street signs on the island.
Replaced the Connector board and Welcome lights.
Trimmed palm trees from 21st Ave. to 41st Ave. by Hardy Services
arborists.
Sand shell was delivered and spread on the 41st Ave. shoulder from the
Sea Oats neighborhood to the beach path.
Cleaned the beach paths on the island.
Major housekeeping of the Public Works site.
Pumped water from heavy rains on 2/23/13 thru 2/27/13. Streets pumped
were 46th Ave., 50th Ave. and 51st Ave.

Charleston County:

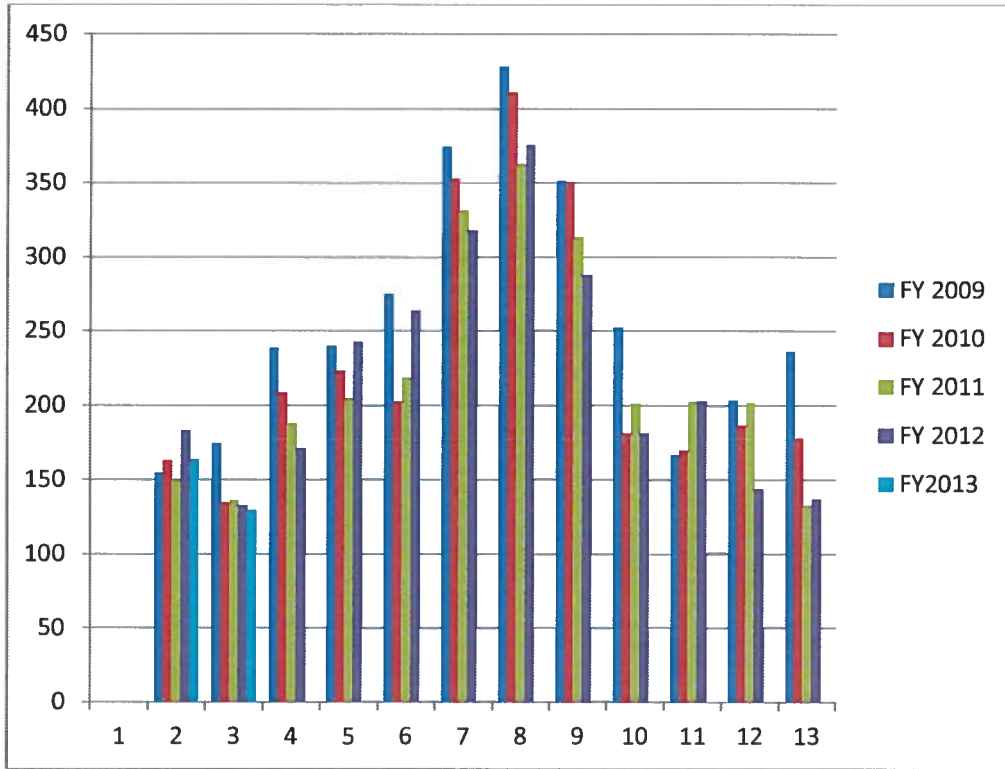
Public Works assisted in the cleaning of beach paths on the island.
Several roads have been re-paved according to the County re-pavement
cycle.

5 Year Garbage

	<u>FY 2009</u>	<u>FY 2010</u>	<u>FY 2011</u>	<u>FY 2012</u>	<u>FY2013</u>
January	154.9	163.04	149.35	183.11	163.58
February	174.42	134.49	136.13	132.82	129.73
March	238.66	208.97	187.91	171.14	
April	240.06	223.43	204.82	242.75	
May	275.02	202.79	218.69	264.14	
June	374.58	352.9	331.02	317.8	
July	427.97	410.92	362.95	375.29	
August	351.25	349.31	313.33	287.83	
September	252.55	181.61	201.55	181.54	
October	166.9	169.78	202.8	203.08	
November	203.71	186.79	202.01	143.83	
December	236.66	178.23	133.17	136.79	
TOTAL	3096.68	2762.26	2643.73	2640.12	

2x week

denotes single stream recycle



Yearly Yard Debris Comparison

Tonnage

	<u>2011</u>	<u>2012</u>	<u>2013</u>
January	91.1	100.71	176.07
February	121.6	106.55	114.67
March	167.97	189.88	
April	219.85	174.22	
May	240.28	178.9	
June	159.84	173.42	
July	161.45	151.13	
August	164.59	163.35	
September	186.62	155.5	
October	162.16	175.34	
November	128.58	133.47	
December	118.22	105.08	
TOTAL	1922.26	1807.55	

