

**City of Isle of Palms
Department of Public Works
January 2014
Donnie Pitts – Director**

Sanitation:

29.27 tons of C&D were transported to the Bees Ferry landfill.
There were 55 hrs. of overtime due to Ice Storm Leon.

Landscaping/Road Maintenance:

Serviced the pooper-scoopers 3 times in January.
Cleaned the debris from the Palm Blvd right-of-way from the ice
storm.
Removed the limb overhang from Palm Blvd at 45th Ave.

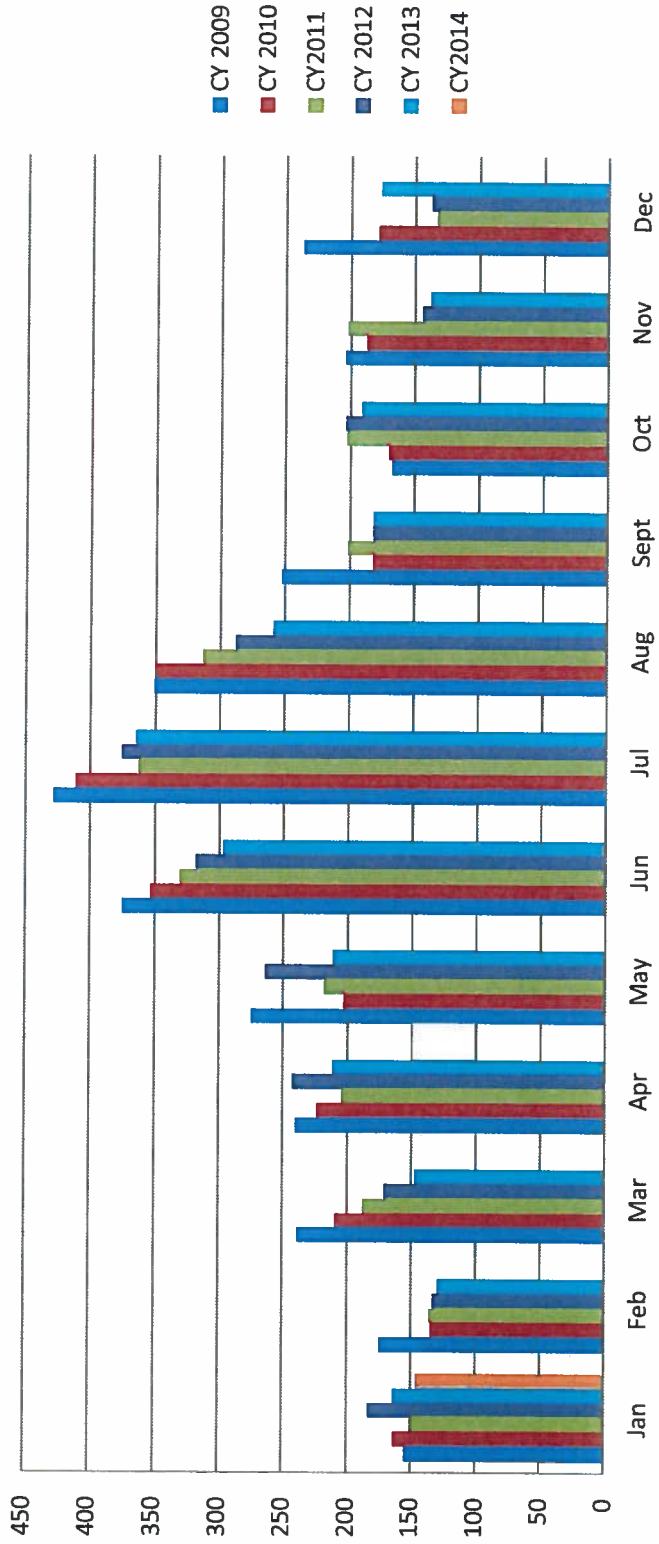
5 Year Garbage

	<u>CY 2009</u>	<u>CY 2010</u>	<u>CY 2011</u>	<u>CY 2012</u>	<u>CY2013</u>	<u>CY 2014</u>
Jan	154.9	163.04	149.35	183.11	163.58	145.63
Feb	174.42	134.49	136.13	132.82	129.73	
Mar	238.66	208.97	187.91	171.14	147.49	
Apr	240.06	223.43	204.82	242.75	211.4	
May	275.02	202.79	218.69	264.14	211.52	
Jun	374.58	352.9	331.02	317.8	297.11	
Jul	427.97	410.92	362.95	375.29	364.64	
Aug	351.25	349.31	313.33	287.83	259.06	
Sept	252.55	181.61	201.55	181.54	181.25	
Oct	166.9	169.78	202.8	203.08	191.05	
Nov	203.71	186.79	202.01	143.83	137.23	
Dec	236.66	178.23	133.17	136.79	176.46	
TOTAL	3096.68	2762.26	2643.73	2640.12	2470.52	

denotes 2x week service

denotes single stream recycle

6 year Garbage Comparison



Tonnage

CY 2011 CY 2012 CY 2013 CY 2014

Jan	91.1	100.71	176.07	141.65
Feb	121.6	106.55	114.67	
Mar	167.97	189.88	199.83	
Apr	219.85	174.22	257.42	
May	240.28	178.9	237.56	
Jun	159.84	173.42	177.76	
Jul	161.45	151.13	194.48	
Aug	164.59	163.35	176.14	
Sept	186.62	155.5	178.91	
Oct	162.16	175.34	172.46	
Nov	128.58	133.47	136.24	
Dec	118.22	105.08	112.79	
TOTAL	1922.26	1807.55		

4 yr yard debris

