

**City of Isle of Palms**  
**Department of Public Works**  
**June 2014**  
**Donnie Pitts – Director**

**Sanitation:**

10.18 tons of C&D were transported to the Bees Ferry landfill

**Landscaping/Road Maintenance:**

Serviced the pooper-scoopers 5 times.

Cleaned the beach of debris on June 2<sup>nd</sup>, 6<sup>th</sup>, 9<sup>th</sup>, 11<sup>th</sup>, 16<sup>th</sup>, 20<sup>th</sup>,  
23<sup>rd</sup>, 27<sup>th</sup>, 28<sup>th</sup> and 30<sup>th</sup>.

Mowed the rights of way from 21<sup>st</sup> to 57<sup>th</sup> Ave., 41<sup>st</sup> Ave. 2 times.

Cleaned the City garbage compactor.

Installed new Mobi Mat at 9<sup>th</sup> Ave. access.

Cleaned and mowed the Building Dept. grounds.

Cleaned and mowed the majority of beach paths.

**City of Isle of Palms**  
**Department of Public Works**  
**July 2014**  
**Donnie Pitts – Director**

**Sanitation:**

22.18 tons of C&D were transported to the Bees Ferry landfill.  
Operated one 8 hour shift of the debris pickup Saturday, July 19.  
5 man operation.  
1 man to clean the beach of broken tents/umbrellas and chairs on  
July 5<sup>th</sup>.

**Landscaping/Road Maintenance:**

Serviced the pooper-scoopers 5 times.  
Cleaned the beach of debris on July 2<sup>nd</sup>, 3<sup>rd</sup>, 4<sup>th</sup>, 5<sup>th</sup>, 7<sup>th</sup>, 11<sup>th</sup>, 14<sup>th</sup>  
18<sup>th</sup>, 21<sup>st</sup>, 24<sup>th</sup>, 28<sup>th</sup>, and 30<sup>th</sup>  
Cleaned the Breach Inlet sidewalk.  
Cleaned the medians at 14<sup>th</sup> Ave. and 21<sup>st</sup> Ave.  
Cleaned the debris in the dunes at the public restrooms.  
Mowed the excess parking (1301 Palm ) 2 times in July.  
There were 2 beach sweeps from community service.  
Mowed the 21<sup>st</sup> beach path  
Cleaned the City compactor

**Stormwater:**

Charleston County cleaned the 41<sup>st</sup> ditch.  
Charleston County cleaned the vegetation of some open ditches on  
the island.  
Eadies Drain and Vac. completed year 4 of the 5 year plan.

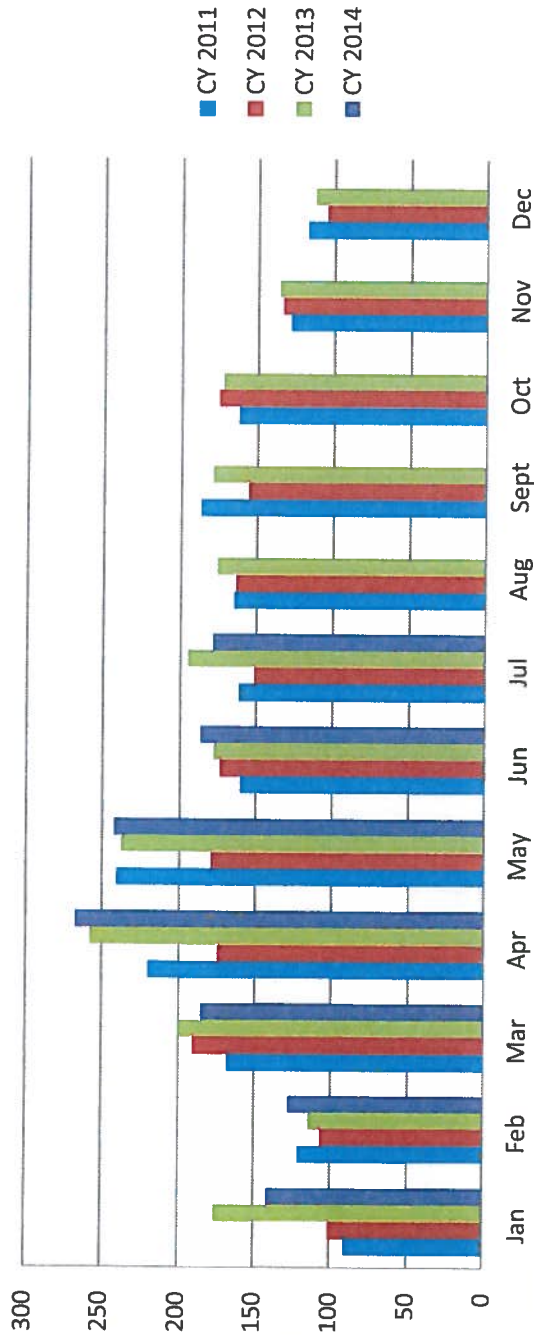
**Yearly Yard Debris Comparison**

**Tonnage**

**CY 2011   CY 2012   CY 2013   CY 2014**

Jan	91.1	100.71	176.07	141.65
Feb	121.6	106.55	114.67	127.61
Mar	167.97	189.88	199.83	184.77
Apr	219.85	174.22	257.42	267.14
May	240.28	178.9	237.56	242.13
Jun	159.84	173.42	177.76	186.26
Jul	161.45	151.13	194.48	178.7
Aug	164.59	163.35	176.14	
Sept	186.62	155.5	178.91	
Oct	162.16	175.34	172.46	
Nov	128.58	133.47	136.24	
Dec	118.22	105.08	112.79	
<b>TOTAL</b>	1922.26	1807.55	2134.33	

# 4 yr yard debris



5 Year Garbage

	<u>CY 2009</u>	<u>CY 2010</u>	<u>CY 2011</u>	<u>CY 2012</u>	<u>CY2013</u>	<u>CY 2014</u>
Jan	154.9	163.04	149.35	183.11	163.58	145.63
Feb	174.42	134.49	136.13	132.82	129.73	111.19
Mar	238.66	208.97	187.91	171.14	147.49	157.97
Apr	240.06	223.43	204.82	242.75	211.4	216.39
May	275.02	202.79	218.69	264.14	211.52	200.97
Jun	374.58	352.9	331.02	317.8	297.11	263.22
Jul	427.97	410.92	362.95	375.29	364.64	355.9
Aug	351.25	349.31	313.33	287.83	259.06	
Sept	252.55	181.61	201.55	181.54	181.25	
Oct	166.9	169.78	202.8	203.08	191.05	
Nov	203.71	186.79	202.01	143.83	137.23	
Dec	236.66	178.23	133.17	136.79	176.46	
<b>TOTAL</b>	3096.68	2762.26	2643.73	2640.12	2470.52	

denotes 2x week service

denotes single stream recycle

# 6 year Garbage Comparison

