

City of Isle of Palms
Department of Public Works
October 2014
Donnie Pitts – Director

Sanitation:

No overtime.

12.02 tons of C&D were transported to the Bees Ferry landfill.

Landscaping/Road Maintenance:

Serviced the pooper-scoopers 4 times in October.

Cleaned the beach of debris on Oct. 6th, Oct. 13th and October 21st.

Continued the beach path fall maintenance at 31st Ave. thru 46th Ave.

Mowed the Breach Inlet right-of-way and beach path.

Trimmed the limb overhang from the bicycle path on Waterway Blvd.

Cleaned the Palm Blvd medians prior to IOP Connector Run.

Replaced the 4 connector lights (Walker Brothers) and entrance sign light.

Removed the temp trail, leveled the path and re-installed the temp trail at 42nd Ave.

Storm Water:

Eadies Drain and Vac - general maintenance on the open ditches also vac and restructured the 28th Ave. Waterway Blvd ditch to the outfall.

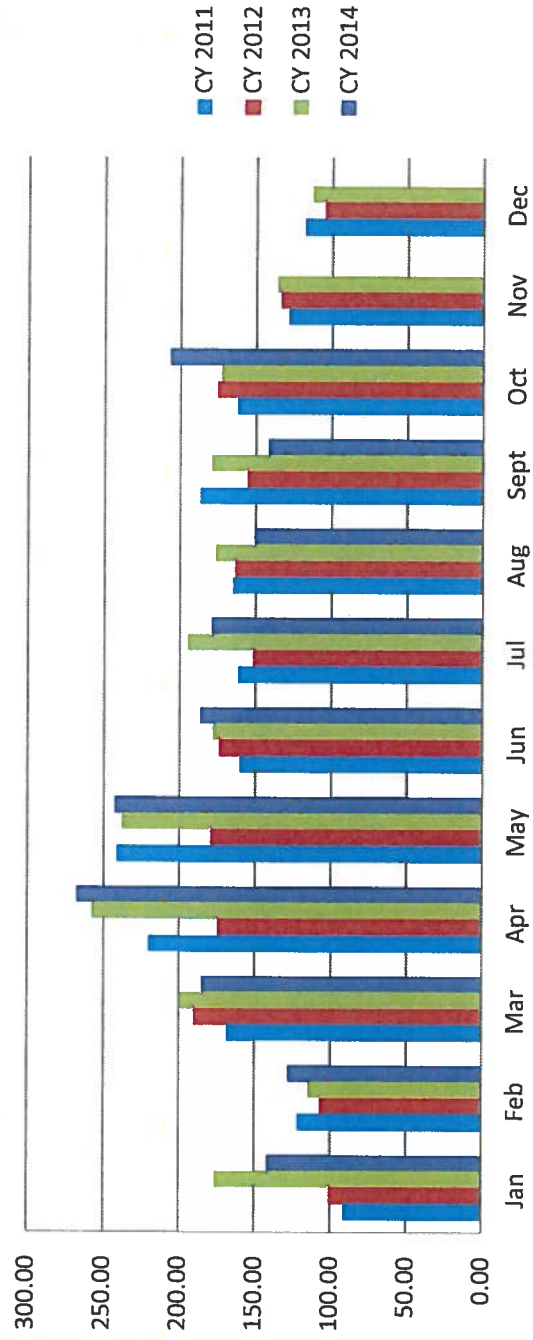
Yearly Yard Debris Comparison

Tonnage

CY 2011 CY 2012 CY 2013 CY 2014

Jan	91.10	100.71	176.07	141.65
Feb	121.60	106.55	114.67	127.61
Mar	167.97	189.88	199.83	184.77
Apr	219.85	174.22	257.42	267.14
May	240.28	178.90	237.56	242.13
Jun	159.84	173.42	177.76	186.26
Jul	161.45	151.13	194.48	178.70
Aug	164.59	163.35	176.14	150.93
Sept	186.62	155.50	178.91	141.36
Oct	162.16	175.34	172.46	206.77
Nov	128.58	133.47	136.24	
Dec	118.22	105.08	112.79	
TOTAL	1922.26	1807.55	2134.33	

4 yr yard debris



5 Year Garbage

	<u>CY 2009</u>	<u>CY 2010</u>	<u>CY 2011</u>	<u>CY 2012</u>	<u>CY2013</u>	<u>CY 2014</u>
Jan	154.9	163.04	149.35	183.11	163.58	145.63
Feb	174.42	134.49	136.13	132.82	129.73	111.19
Mar	238.66	208.97	187.91	171.14	147.49	157.97
Apr	240.06	223.43	204.82	242.75	211.4	216.39
May	275.02	202.79	218.69	264.14	211.52	200.97
Jun	374.58	352.9	331.02	317.8	297.11	263.22
Jul	427.97	410.92	362.95	375.29	364.64	355.90
Aug	351.25	349.31	313.33	287.83	259.06	280.34
Sept	252.55	181.61	201.55	181.54	181.25	217.83
Oct	166.9	169.78	202.8	203.08	191.05	162.40
Nov	203.71	186.79	202.01	143.83	137.23	
Dec	236.66	178.23	133.17	136.79	176.46	
TOTAL	3096.68	2762.26	2643.73	2640.12	2470.52	

denotes 2x week service

denotes single stream recycle

6 year Garbage Comparison

