

**City of Isle of Palms**  
**Department of Public Works**  
**September 2015**  
**Donnie Pitts – Director**

**Sanitation:**

40.20 tons of C&D were transported to the Bees Ferry landfill

**Landscaping/Road Maintenance:**

Serviced the pooper-scoopers 5 times.

Cleaned the beach of debris on September 4<sup>th</sup>, 11<sup>th</sup>, 18<sup>th</sup> and 25<sup>th</sup>.

Cleaned the Breach Inlet sidewalk.

Initiated fall beach path maintenance with skid steer equipment.

Mowed the right-of-way from 41<sup>st</sup> thru 57<sup>th</sup> and 45<sup>th</sup> to Cedar Street  
once.

Cleaned the parking lot and compactor

**Stormwater:**

September 2015-2016

**BALANCE**

Date	Vehicle	Description	Vendor	Cost	76024.37
8-Sep	pw5	fan belt	Advance auto	13.12	
8-Sep	pw18	brake chambers	Jhaak Fleet	1344.04	
8-Sep	pw25	pm	Jhaak Fleet	212.72	
8-Sep	pw19	tire repair	Jhaak Fleet	138.84	
13-Sep	pw22	brake chambers	Jhaak Fleet	823.5	
13-Sep	pw5	pm	Jhaak Fleet	267.83	
13-Sep	pw5	belt & bracket	Jhaak Fleet	\$297.66	
13-Sep	pw16	wiper fluid	auto zone	\$8.33	
13-Sep	pw18	tire repair	Snider tire	678.78	
13-Sep		cleaners	auto zone	24.84	
13-Sep	pw2	pm	Jhaak Fleet	1231.17	
13-Sep	pw22	tires	Snider tire	984.47	
13-Sep	pw18	tires	Snider tire	1001.68	
20-Sep	pw21	tires	Snider tire	511.74	
20-Sep	pw10	rear glass	Glasspro	536.01	
20-Sep	pw2	leveling valve/lights	Jhaak Fleet	561.22	
20-Sep	pw14	radio/cooler brkt	Jhaak Fleet	126	
27-Sep	pw22	pm	Jhaak Fleet	530.12	
27-Sep	pw18	<b>tarp</b>	Jhaak Fleet	389.42	
27-Sep	pw16	water cooler install	Jhaak Fleet	76.14	
				9757.63	-9757.63

**Ending balance**

**66266.74**

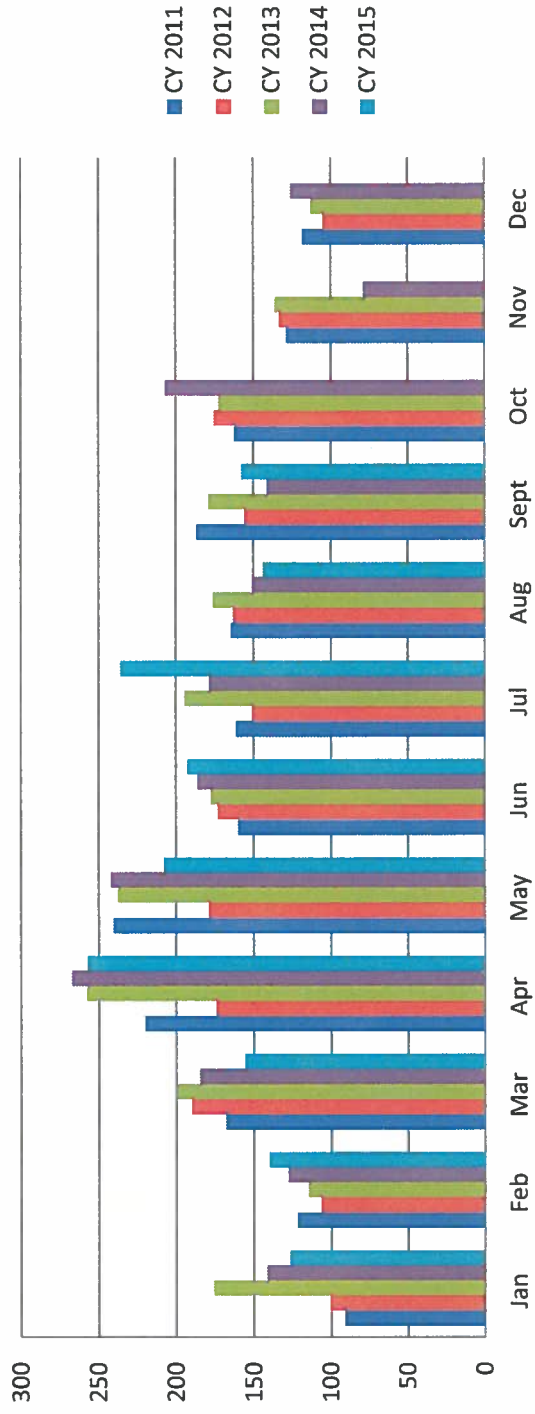
**Yearly Yard Debris Comparison**

**Tonnage**

**CY 2011   CY 2012   CY 2013   CY 2014   CY 2015**

Jan	91.1	100.71	176.07	141.65	126.72
Feb	121.6	106.55	114.67	127.61	140.12
Mar	167.97	189.88	199.83	184.77	155.3
Apr	219.85	174.22	257.42	267.14	257.04
May	240.28	178.9	237.56	242.13	207.7
Jun	159.84	173.42	177.76	186.26	192.69
Jul	161.45	151.13	194.48	178.7	235.7
Aug	164.59	163.35	176.14	150.93	143.57
Sept	186.62	155.5	178.91	141.36	157.52
Oct	162.16	175.34	172.46	206.77	
Nov	128.58	133.47	136.24	78.74	
Dec	118.22	105.08	112.79	125.85	
<b>TOTAL</b>	1922.26	1807.55	2134.33	2031.91	

# 5 yr yard debris



## 5 Year Garbage

	<u>CY 2011</u>	<u>CY 2012</u>	<u>CY2013</u>	<u>CY 2014</u>	<u>CY 2015</u>
Jan	149.35	183.11	163.58	145.63	151.16
Feb	136.13	132.82	129.73	111.19	118.32
Mar	187.91	171.14	147.49	157.97	197.79
Apr	204.82	242.75	211.4	216.39	188.14
May	218.69	264.14	211.52	200.97	201.43
Jun	331.02	317.8	297.11	263.22	255.26
Jul	362.95	375.29	364.64	355.9	342.22
Aug	313.33	287.83	259.06	280.34	246.55
Sept	201.55	181.54	181.25	217.83	213.06
Oct	202.8	203.08	191.05	162.4	
Nov	202.01	143.83	137.23	118.23	
Dec	133.17	136.79	176.46	176.04	
<b>TOTAL</b>	2643.73	2640.12	2470.52	2406.11	

denotes 2x week service

denotes single stream recycle

# 5 year Garbage Comparison

