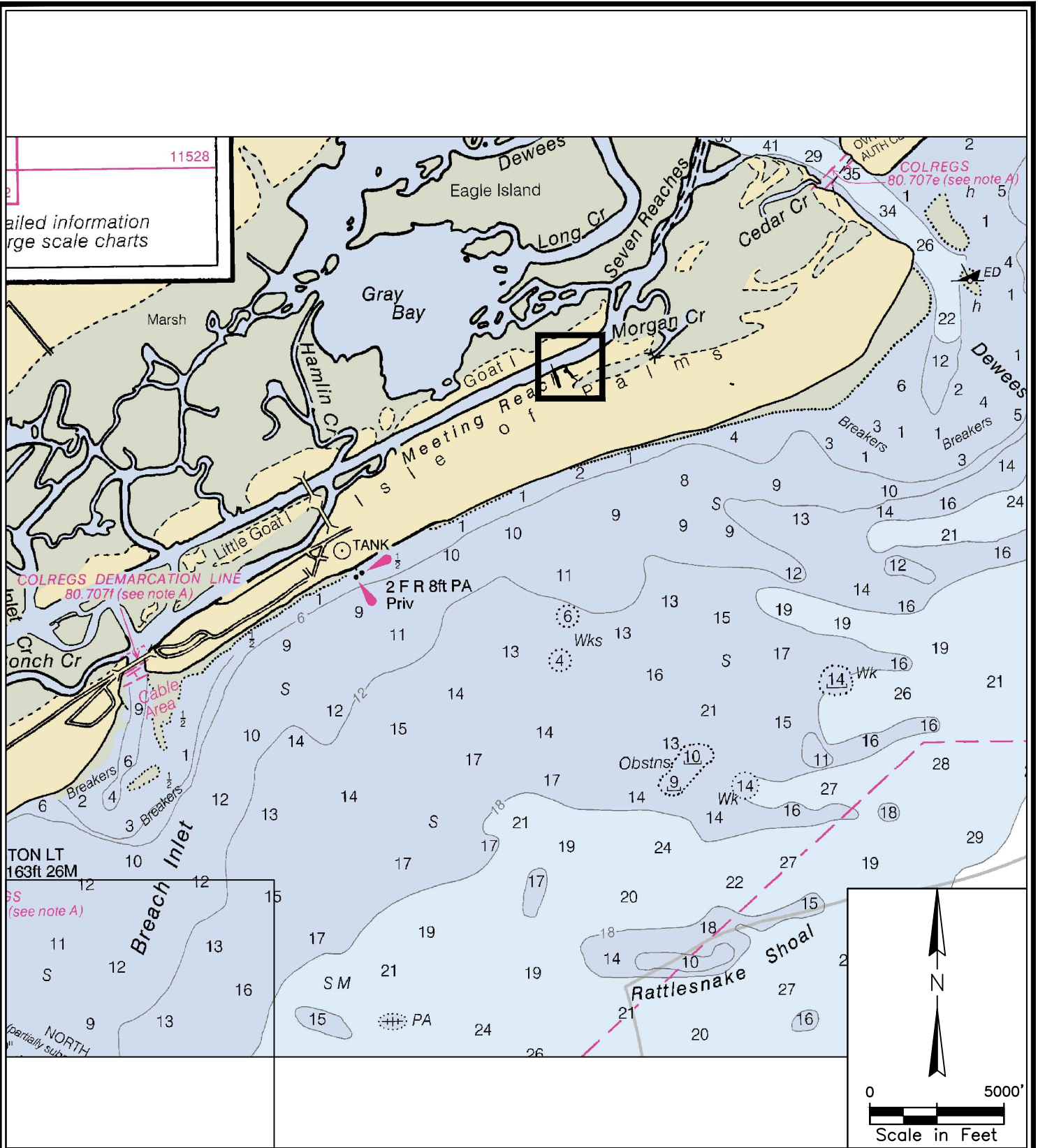


C:\Projects\18-3287 IOP Marine Permitting & Design\Geotech Request\borings.dwg 1/9/26/19
 NOTE: THESE DRAWINGS AND DESIGNS ARE STRICTLY CONFIDENTIAL AND PROTECTED BY INTERNATIONAL COPYRIGHT LAW. DETAILS MUST NOT BE DISCLOSED, REPRODUCED OR COMMUNICATED TO A 3rd PARTY IN ANY FORM OR MANNER WITHOUT THE PRIOR WRITTEN APPROVAL OF ATM APPLIED TECHNOLOGY & MANAGEMENT.



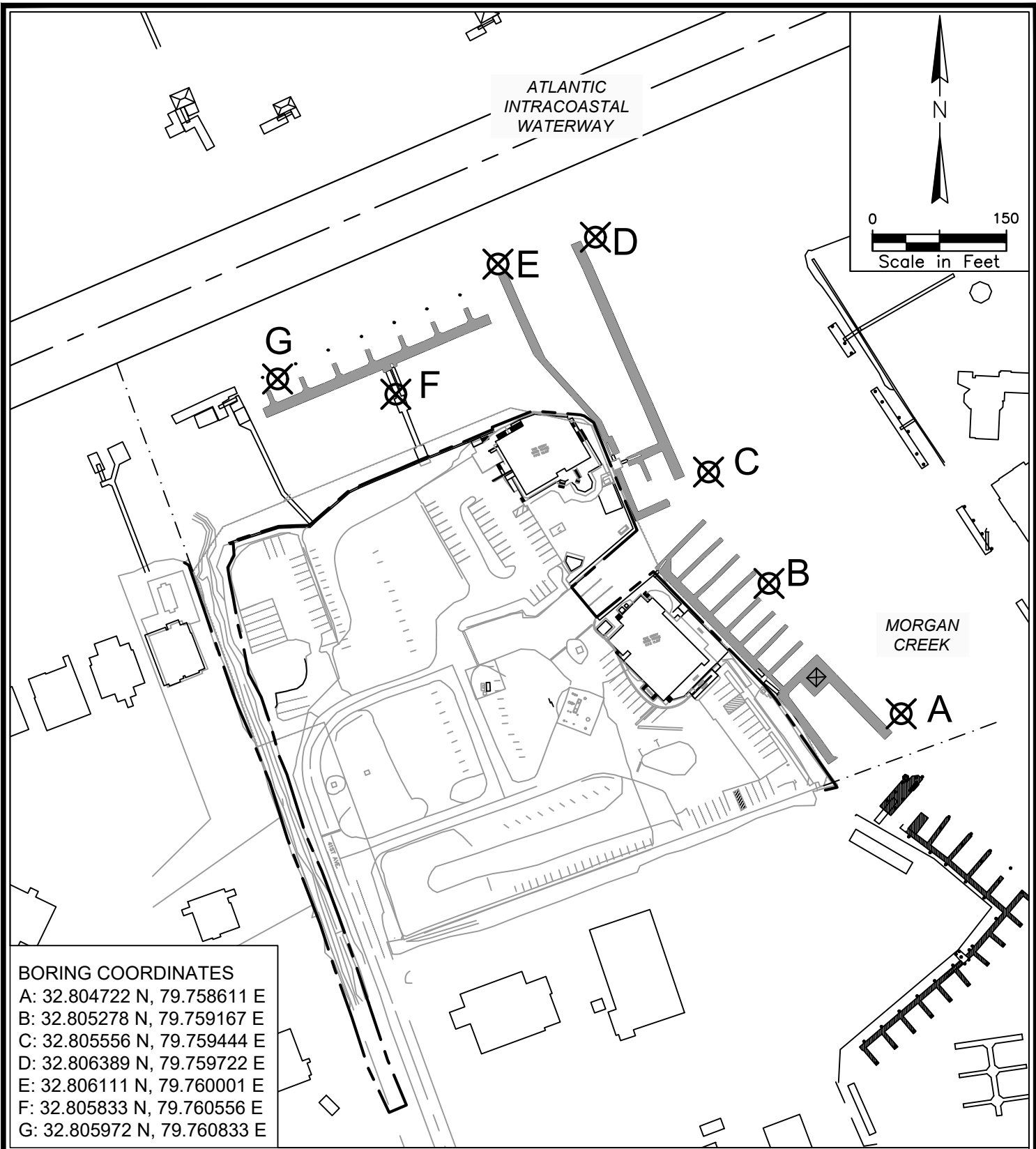
PROJECT LOCATION MAP

Isle of Palms Marina, Isle of Palms, SC
 50 41st Avenue, Isle of Palms



June 25, 2019

C:\Projects\118-3287 IOP Marine Permitting & Design\Geotech Request\Borings.dwg 2/6/2019
NOTE: THESE DRAWINGS AND DESIGNS ARE STRICTLY CONFIDENTIAL AND PROTECTED BY INTERNATIONAL COPYRIGHT LAW. DETAILS MUST NOT BE DISCLOSED, REPRODUCED OR COMMUNICATED TO A 3rd PARTY IN ANY FORM OR MANNER WITHOUT THE PRIOR WRITTEN APPROVAL OF APPLIED TECHNOLOGY & MANAGEMENT.



BORING COORDINATES	
A:	32.804722 N, 79.758611 E
B:	32.805278 N, 79.759167 E
C:	32.805556 N, 79.759444 E
D:	32.806389 N, 79.759722 E
E:	32.806111 N, 79.760001 E
F:	32.805833 N, 79.760556 E
G:	32.805972 N, 79.760833 E

- Notes:
- 1) Borings F and G are Provisional Only
 - 2) Final locations and numbers of boreholes may be subject to change

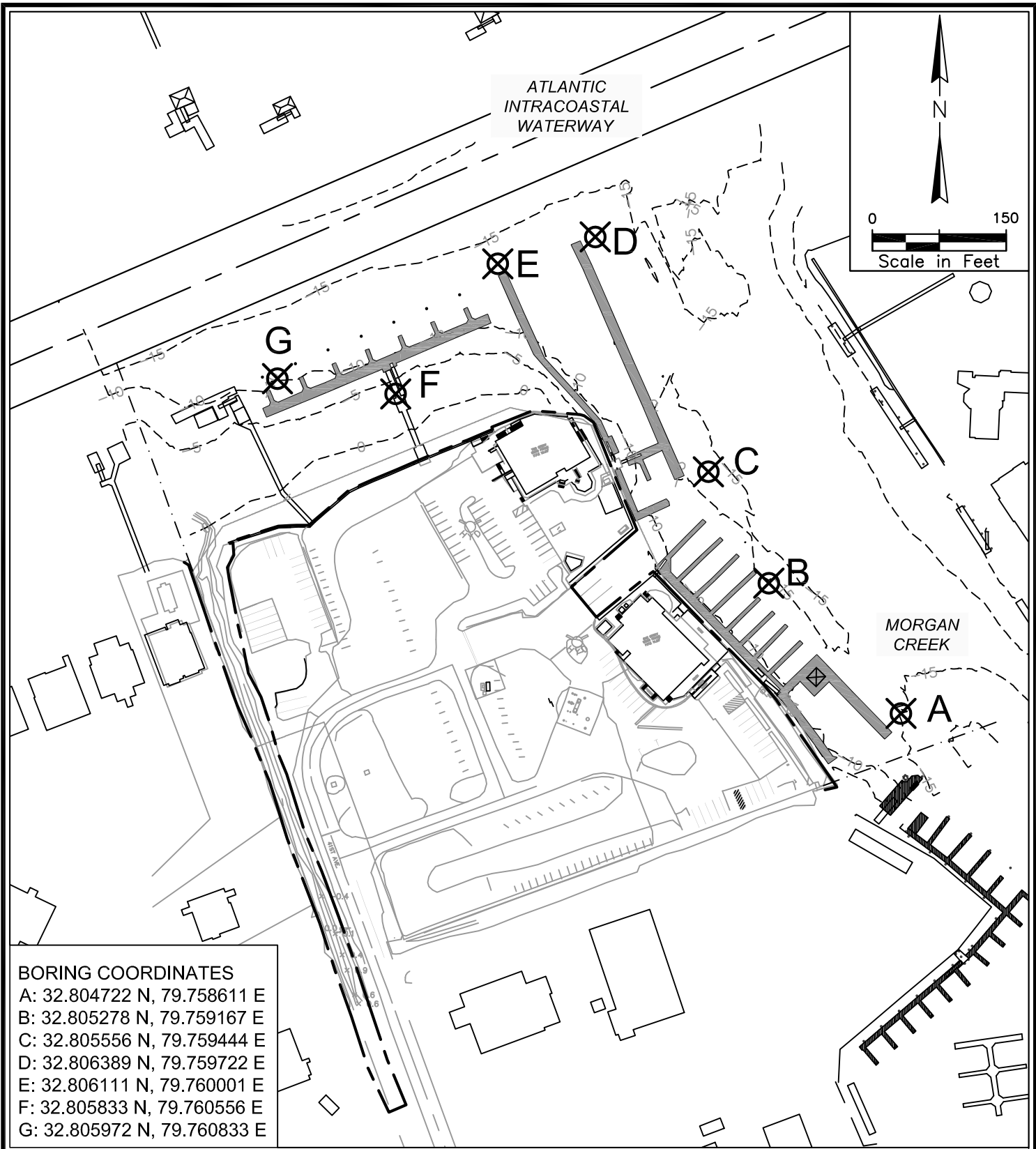
PROPOSED LOCATIONS FOR
GEOTECHNICAL INVESTIGATION

Isle of Palms Marina, Isle of Palms, SC
50 41st Avenue, Isle of Palms



June 25, 2019

O:\Projects\18-3287 IOP Marina Permitting & Design\Geotech Request\Borings.dwg 2 6/26/19
NOTE: THESE DRAWINGS AND DESIGNS ARE STRICTLY CONFIDENTIAL AND PROTECTED BY INTERNATIONAL COPYRIGHT LAW. DETAILS MUST NOT BE DISCLOSED, REPRODUCED OR COMMUNICATED TO A 3rd PARTY IN ANY FORM OR MANNER WITHOUT THE PRIOR WRITTEN APPROVAL OF APPLIED TECHNOLOGY & MANAGEMENT.



BORING COORDINATES	
A:	32.804722 N, 79.758611 E
B:	32.805278 N, 79.759167 E
C:	32.805556 N, 79.759444 E
D:	32.806389 N, 79.759722 E
E:	32.806111 N, 79.760001 E
F:	32.805833 N, 79.760556 E
G:	32.805972 N, 79.760833 E

- Notes:
- 1) Borings F and G are Provisional Only
 - 2) Final locations and numbers of boreholes may be subject to change

PROPOSED LOCATIONS FOR
GEOTECHNICAL INVESTIGATION

Isle of Palms Marina, Isle of Palms, SC
50 41st Avenue, Isle of Palms



June 25, 2019