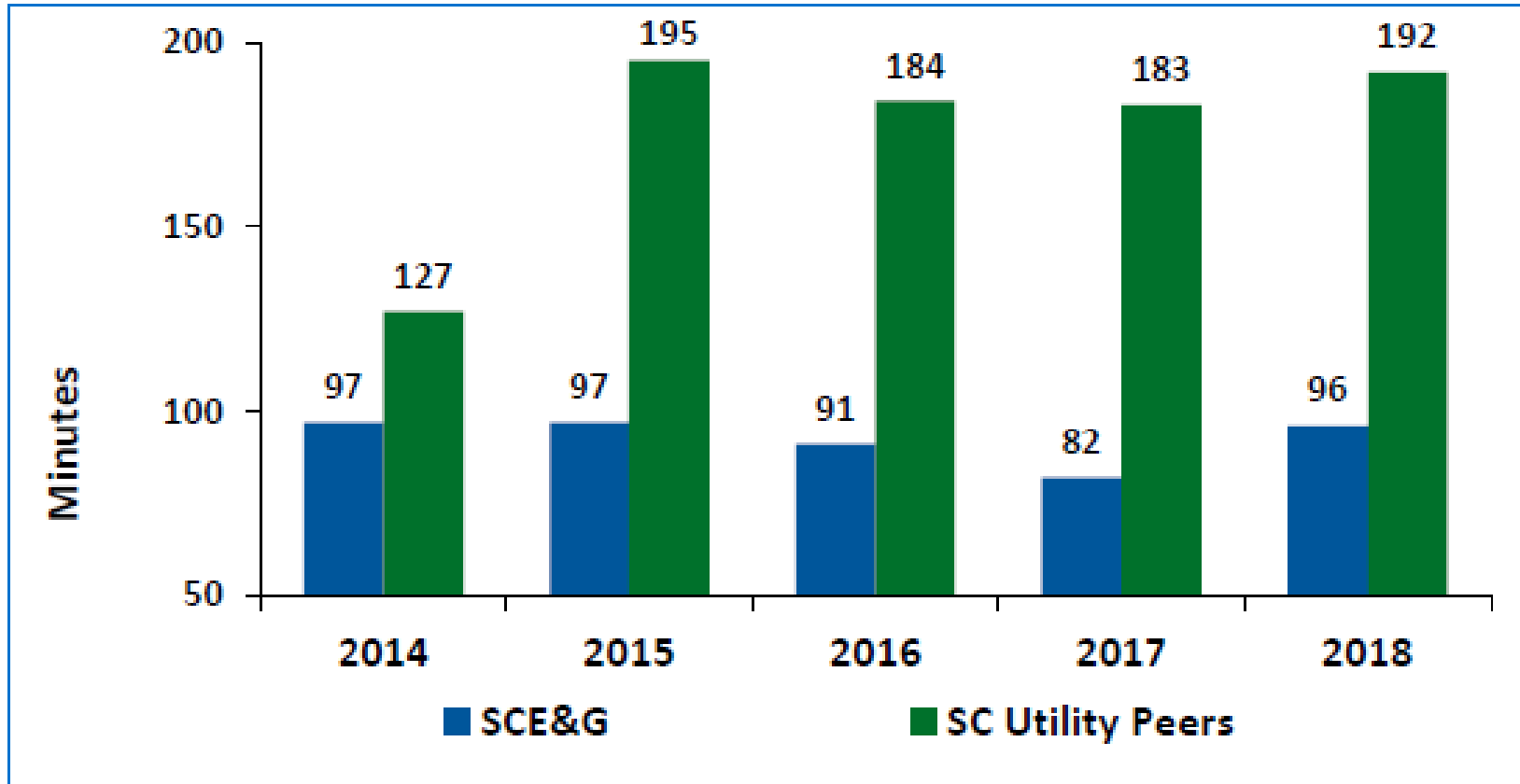


# **Dominion Energy South Carolina**

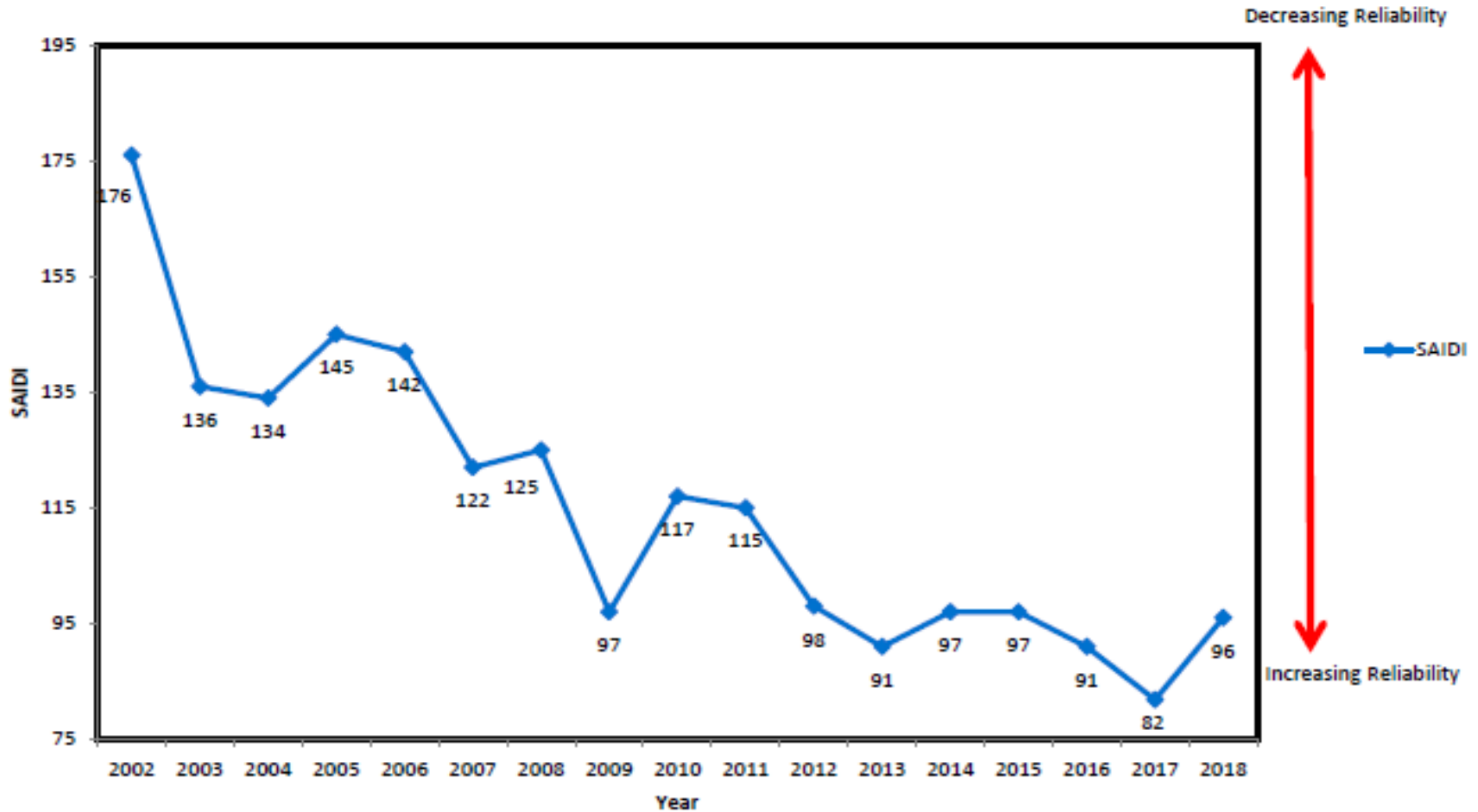
**City of Isle of Palms Council Meeting**  
**July 23, 2019**

# Electric System Reliability (SAIDI)

System Average Interruption Duration Index (SAIDI) represents the average number of minutes that a customer is without power on the electrical system.



# System Reliability 2002 - 2018



# General Terms & Conditions of Electric Service

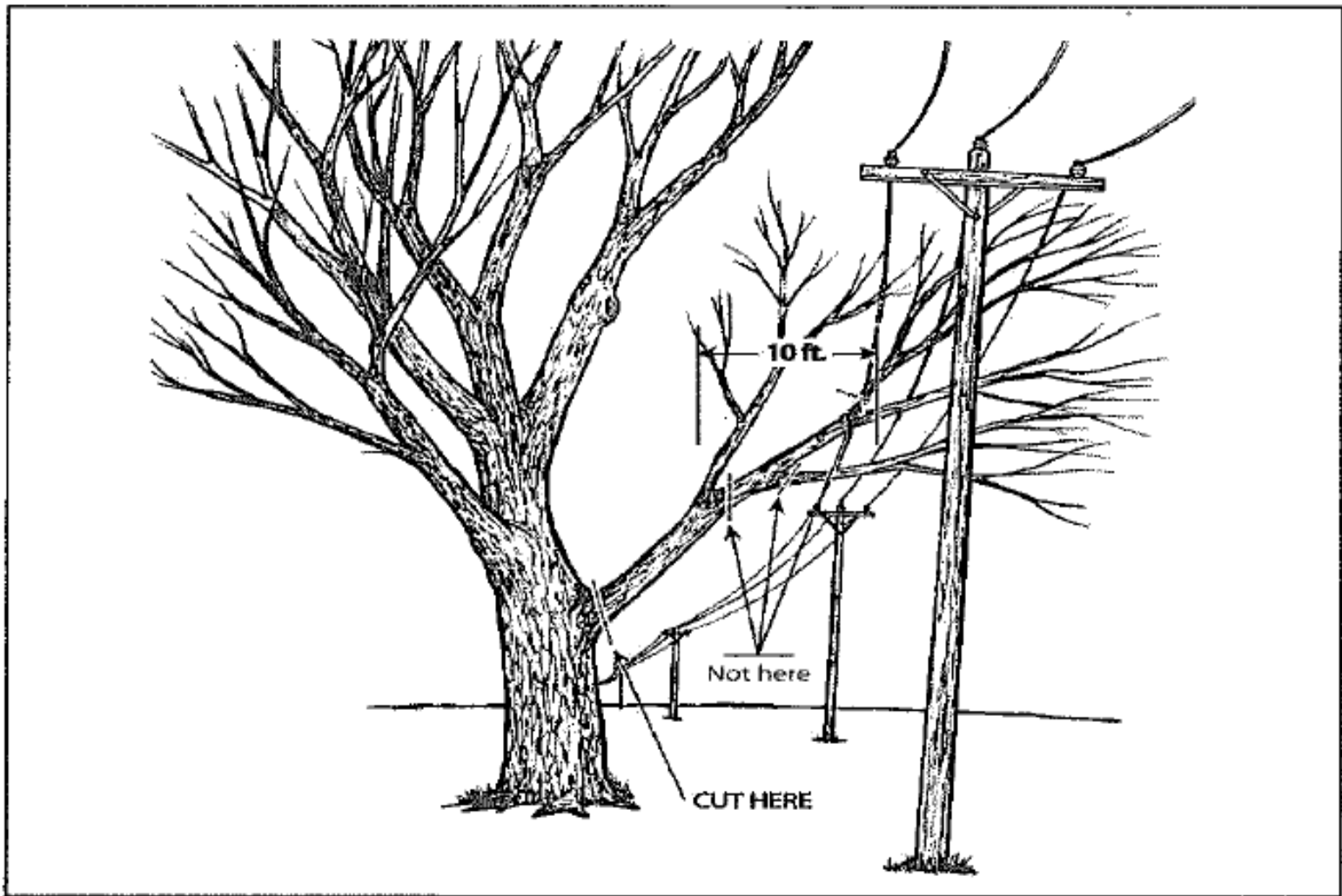
The Customer, in requesting or accepting service, thereby grants the Company without charge necessary rights-of-way and trimming and clearing privileges for its facilities along, across, and under property controlled by the Customer to the extent that such rights-of-way and trimming and clearing privileges for its facilities along, across, and under property controlled by the Customer are required, necessary or convenient to enable Company to supply service to the Customer and the Customer also grants the Company the right to continue to extend the Company's facilities on, across, or under property controlled by the customer with necessary trimming and clearing rights to serve other Customers.

# 2019 Isle of Palms Project

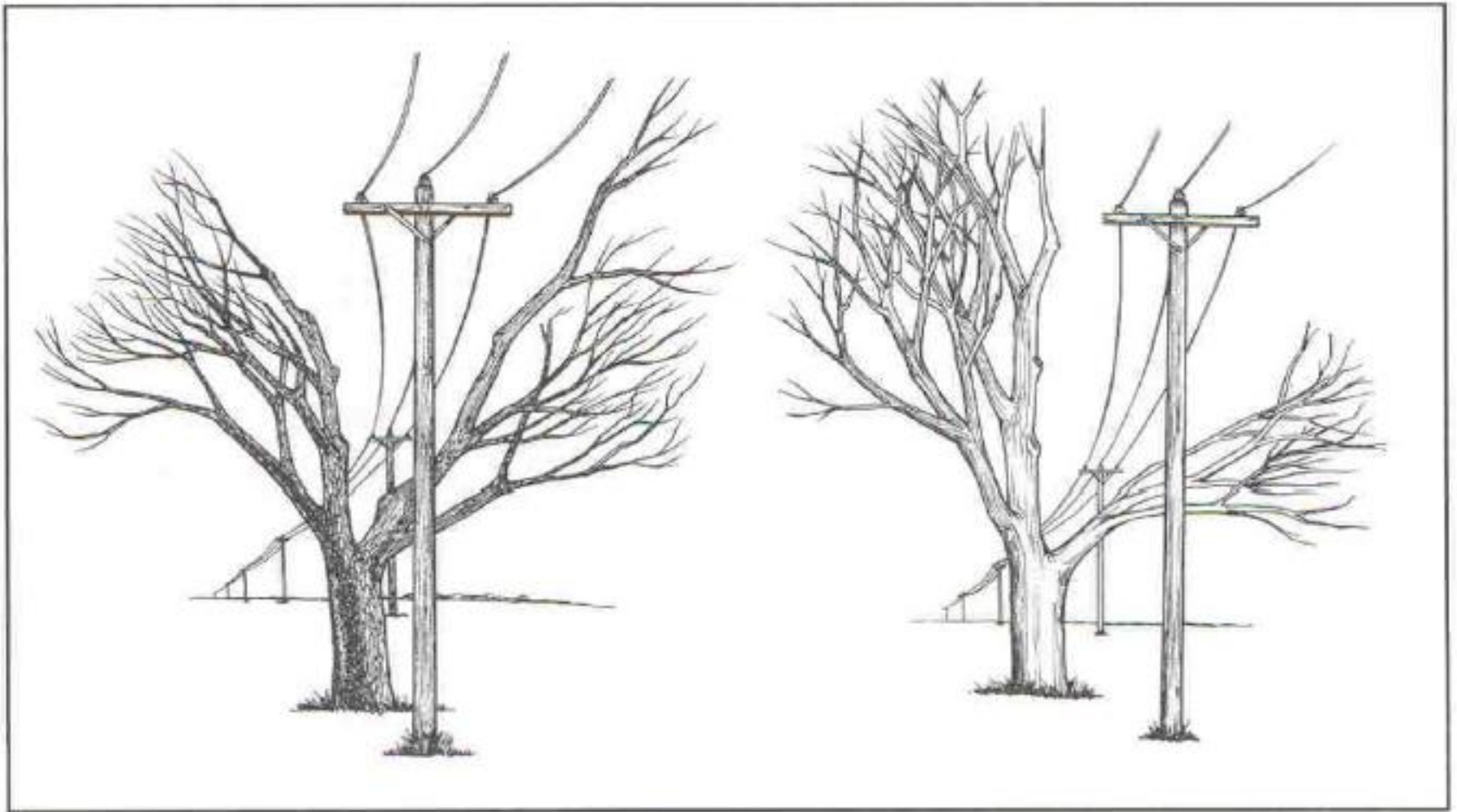
- 80 miles of distribution line with approximately 18 miles in city of IOP
- Lewis Tree is the contractor for this project. Lewis also performed the work last cycle in 2014.
- Work started in Mt. Pleasant and we currently have crews in Mt. Pleasant and Sullivan's Island.
- Anticipate the work starting mid to late August and finishing in December.
- Notifications will be sent to residents several weeks prior to trimming to notify them of the upcoming work.
- Tree trimming workshop for IOP residents scheduled for August 7 2019

# Distribution Line Clearing Specifications

- Minimum of 10' clearance to side from outermost primary conductor
- Minimum of 20' clearance above highest primary conductor
- Minimum of 10' clearance below bottom most primary conductor or 4' below neutral
- Service lines cleared for abrasion
- Certain conditions exist that preclude these clearances such as significant size parent limbs/leaders and large trunks that are located less than 10' from outermost primary conductor.



**Figure 8. Remove whole branches when practical. When clearance distances are specified (for example, 10 feet), the cut should be made at the next suitable lateral or parent limb beyond the specified distance.**



**Figure 10. Directional pruning causes trees to assume different shapes depending on the location of utility facilities.**







# Questions?